

TECHNICAL MANUAL

DIRECT SUPPORT AND GENERAL SUPPORT MAINTENANCE

REPAIR PARTS AND SPECIAL TOOLS LISTS

(INCLUDING DEPOT MAINTENANCE REPAIR PARTS

AND SPECIAL TOOLS)

DISTRIBUTOR-TRANSMITTER, TELETYPEWRITER

TT-122A/FG, TT-123A/FG,

TT-702A/FG, AND TT-703A/FG

**This copy is a reprint which includes current
pages from Change 1.**

**DIRECT SUPPORT AND GENERAL SUPPORT MAINTENANCE
 REPAIR PARTS AND SPECIAL TOOLS LISTS
 (INCLUDING DEPOT MAINTENANCE REPAIR PARTS AND SPECIAL TOOLS)**

**DISTRIBUTOR-TRANSMITTER, TELETYPEWRITER
 TT-122A/FG, TT-123A/FG, TT-702A/FG, AND TT-703A/FG**

Current as of 12 December 1973

	Paragraph	Page
SECTION I.	INTRODUCTION	
	Scope	1 1-1
	General.....	2 1-1
	Explanation of columns.....	3 1-1
	Special information.....	4 1-2
	Location of repair parts	5 1-2
	Federal supply code for manufacturers	6 1-3
	Recommendations for maintenance publication improvements.....	7 1-3
II.	REPAIR PARTS FOR DIRECT SUPPORT, GENERAL SUPPORT, AND DEPOT MAINTENANCE (TT-122A/FG).....	2-1
III.	SPECIAL TOOLS, TEST, AND SUPPORT EQUIPMENT FOR DIRECT SUPPORT, GENERAL SUPPORT, AND DEPOT MAINTENANCE (TT-122A/FG) (Not applicable)	
IV.	INDEX-FEDERAL STOCK NUMBER AND REFERENCE NUMBER CROSS REFERENCE TO FIGURE AND ITEM NUMBER OR REFERENCE DESIGNATION (TT-122A/FG).....	4-1
V.	REPAIR PARTS FOR DIRECT SUPPORT, GENERAL SUPPORT, AND DEPOT MAINTENANCE (TT-123A/FG).....	5-1
VI.	SPECIAL TOOLS, TEST, AND SUPPORT EQUIPMENT FOR DIRECT SUPPORT, GENERAL SUPPORT, AND DEPOT MAINTENANCE TT-123A/FG) (Not applicable)	
VII.	INDEX-FEDERAL STOCK NUMBER AND REFERENCE NUMBER CROSS REFERENCE TO FIGURE AND ITEM NUMBER OR REFERENCE DESIGNATION (TT-123A/FG).....	7-1
VIII.	REPAIR PARTS FOR DIRECT SUPPORT, GENERAL SUPPORT, AND DEPOT MAINTENANCE (UNIQUE TO TT-702A/FG AND TT-703A/FG).....	8-1
IX.	SPECIAL TOOLS, TEST, AND SUPPORT EQUIPMENT FOR DIRECT SUPPORT, GENERAL SUPPORT, AND DEPOT MAINTENANCE (UNIQUE TO TT-702A/FG AND TT-703A/FG) (Not applicable)	
X.	INDEX-FEDERAL STOCK NUMBER AND REFERENCE NUMBER CROSS REFERENCE TO FIGURE AND ITEM NUMBER OR REFERENCE DESIGNATION (UNIQUE TO TT-702A/FG AND TT-703A/FG).....	10-1

*This manual supersedes TM 11-5815-219-35P, 16 November 1964.

LIST OF ILLUSTRATIONS

<i>Number</i>	<i>Title</i>	<i>Page</i>
1	Tape transmitter Cover	7-6
2	Tape-Out Sensing Mechanism	7-6
3	Tape transmitter Operating Levers	7-7
4	Code Sensing Levers	7-8
5	Selector Levers	7-8
6	Distributor-Transmitter Camshaft.....	7-9
7	Transmitter Contacts	7-9.1
8	Magnet, Filter, and Terminal Board	7-9.1
9	Tape Transmitter Frame.....	7-9.2
10	Motor Dust Cover, Base Frame, and Power Shaft	7-9.3
11	Synchronous Motor	7-9.4
12	Base Electrical Components.....	7-9.5
13	Series Governed Motor	7-9.6
14	Base Electrical Components.....	7-9.7
15	Parts Unique to TT-702A/FG and TT-703A/FG.....	8-3
16	Circuit Card Assembly, Transmitter	8-4
17	Power Supply Assembly.....	8-5
18	Transmitter Contact Assembly.....	8-6

**SECTION I
INTRODUCTION**

1. Scope

This manual lists repair parts required for the performance of direct support, general support, and depot maintenance of the TT-122A/FG, TT-123A/FG, TT-702A/FG, and TT-703A/FG.

NOTE

The TT-122A/FG, when modified for low-level operation, comprises Distributor-Transmitter, Teletypewriter TT-702A/FG. The TT-123A/FG, when modified for low-level operation, comprises Distributor-Transmitter, Teletypewriter TT-703A/FG.

2. General.

This repair parts list is divided into the following sections: *a. Repair Parts List -Sections II, V, and VIII.* A list of repair parts authorized for the performance of maintenance at the direct support, general support, and depot level.

b. Special Tools, Test and Support Equipment - Sections III, VI, and IX. Not applicable.

c. Index-Federal Stock Number and Reference Number Cross Reference to Figure and Item Number or Reference Designation- Sections IV, VII, and X. A list of Federal stock numbers in ascending numerical sequence, followed by a list of reference numbers in ascending alphanumeric sequence, cross-referenced to illustration figure number and item number.

3. Explanation of Columns

The following provides an explanation of columns in the tabular lists:

a. Source, Maintenance, and Recoverability Codes (SMR).

(1) Source codes indicate the selection status and source for the listed item. Source codes are:

<i>Code</i>	<i>Explanation</i>
P -	Repair parts which are stocked in or supplied from the GS/DSA or Army supply system and authorized for use at indicated maintenance categories.
P2 -	Repair parts which are procured and stocked for insurance purposes because the combat or military essentiality of the end item dictates that a minimum quantity be available in the supply system.

P9 - Assigned to items which are NSA design controlled: unique repair parts, special tools, test, measuring, and diagnostic

equipment, which are stocked and supplied by the Army COMSEC logistic system, and which are not subject to the provisions of AR 380-41.

P10 - Assigned to items which are NSA design controlled: special tools, test, measuring, and diagnostic equipment for support, which are accountable under the provisions of AR 380-41, and which are stocked and supplied by the Army COMSEC Logistic system.

M - Repair parts which are not procured or stocked, but are to be manufactured in indicated maintenance levels.

A - Assemblies which are not procured or stocked as such, but are made up of two or more units. Such component units carry individual stock numbers and descriptions, are procured and stocked separately, anti can be assembled to form the required assembly at indicated maintenance categories.

X - Parts and assemblies which are not procured or stocked an(l the mortality of which normally is below that of the applicable end item or component. The failure of such part or assembly should result in retirement of the tend item from the supply system.

X1 - Repair parts which are not procured or stocked. The requirement for such items will be filled by use of the next higher assembly or component.

X2 - Repair parts which are not stocked. The indicated maintenance category requiring such repair parts will attempt to obtain same through cannibalization. Where such repair parts are not obtainable through cannibalization, requirements will be requisitioned, with accompanying justification, through normal supply channels.

G - Major assemblies that are procured with PEMA funds for initial issue only as exchange assemblies at DSU and GSU level. These will not be stocked above DS and GS level or returned to depot supply level.

(2) Maintenance codes indicate the lowest category of maintenance authorized to install the listed item. The maintenance level codes are:

Code	Explanation
C -	Operator/crew
O -	Organizational maintenance
F -	Direct, support maintenance
H -	General support maintenance
D -	Depot maintenance

(3) Recoverability codes indicate whether unserviceable items should be returned for recovery or salvage. Items not coded are expendable. Recoverability codes are:

Code	Explanation
R -	Repair parts and assemblies that are economically repairable at DSU and GSU activities and are normally furnished by supply on an exchange basis.
S -	Repair parts and assemblies which are economically repairable at DSU and GSU activities and which normally are furnished by supply on an exchange basis. Allen items are determined by GSU to be uneconomically repairable, they will be evacuated to a depot for evaluation and analysis before final disposition.
T -	High dollar value recoverable repair parts which are subject to special handling and are issued on an exchange basis. Such repair parts normally are repaired or overhauled at depot maintenance activities.
U -	Repair parts specifically selected for salvage by reclamation units because of precious metal content, critical materials, or high-dollar value reusable casings or castings.

b. Federal Stock Number. This column indicates the Federal stock number assigned to the item and will be used for requisitioning purposes.

c. Description This column indicates the Federal item name and any additional description of the item required. The index number has been included as part of the description to aid in the location of "same as" items. A part number, or other reference number, is followed by the applicable five-digit Federal supply code for manufacturers in parentheses.

d. Unit of Measure (C/M). A two-character alphabetic abbreviation indicating the amount or quantity of the item upon which the allowances are based, e.g., ft, ea., pl., etc.

e. Quantity Incorporated in Unit. Indicates the quantity of the item used in the TT-122A/FG, TT-123A./FG, TT-702A/FG, and TT-703A/FG. Subsequent appearances of the same item in the same assembly are indicated by the letters "REF".

f. 30-Day DS/GS Maintenance Allowances.

NOTE

Allowance in GS column are for GS maintenance only.

(1) The allowances columns are divided into three subcolumns. Indicated in each subcolumn, opposite the first appearance of each item, is the total quantity of items authorized for the number of equipments supported. Subsequent appearances of the same item will have the letters "REF" in the applicable allowance columns. Items authorized for use as required, but not for initial stockage, are identified with an asterisk in the allowance column.

(2) The quantitative allowances for DS/GS levels of maintenance will represent initial stockage for a 30-day period for the number of equipments supported.

(3) Determination of the total quantity of parts required for maintenance of more than 100 of these equipments can be accomplished by converting the equipment quantity to a decimal factor by placing a decimal point before the next to last digit of the number to indicate hundredths, and multiplying the decimal factor by the parts quantity authorized in the 51-100 allowance column. Example, authorized allowance for 51-100 equipments is 40; for 150 equipments multiply 50 by 1.50 or 60 parts required.

g. One-Year Allowances per 100 Equipments/Contingency Planning Purposes. This column indicates opposite the first appearance of each item the total quantity required for distribution and contingency planning purposes. The ranges of items indicates total quantities of all authorized items required to provide for adequate support of 100 equipments for 1 year.

h. Depot Maintenance Allowance per 100 Equipments. This column indicates, opposite the first appearance of each item, the total quantity authorized for depot maintenance of 100 equipments. Subsequent appearances of the same item will have the letters "REF" in the allowance column. Items authorized for use as required, but not for initial stockage, are identified with an asterisk in the allowance column.

i. Illustration. This column is divided as follows:

(1) *Figure number.* Indicates the figure number of the illustration in which the item is shown.

(2) *Item number or reference designation.* Indicates the item number used to identify the item in the illustration.

4. Special Information

a. Usable on codes are included in column 3. Uncoded items in section II apply to the TT-122A/FG and the TT-702A/FG. Uncoded items in section V apply to the TT-123A/FG and the TT-703A/FG. Uncoded items in section VII apply to the TT-702A/FG

and the TT-703A/FG. Usable on codes used in this publication are:

Code	Used on
A04	TT-122A/FG
A05	TT-123A/FG
5EL	TT-702A/FG
5EM	TT-703A/FG

b. Repair parts mortality is computed from failure rates derived from experience factors with the individual parts in a variety of equipments. Variations in the specific application and periods of use of electronics equipment, the fragility of electronics piece parts, Plus intangible material and quality factors intrinsic to the manufacture of electronic parts, do not permit mortality to be based on hours of end item use. However, long periods of continuous use under adverse conditions are likely to increase repair parts mortality.

c. The following publications pertain to the TT-122A/FG, TT-123A/FG, TT-702A/FG, and TT703A/FG and their components.

TM 11-5815-219-14	Operator's, Organizational, Direct Support, and General Support Maintenance Manual Teletypewriter Distributor-Transmitters TT-122A/FG, TT-123A/FG, TT-235/FG, TT-702A/FG and TT-703A/FG. (TO 31W4-2FG-1371)
TM 11-5815-219-20P	Organizational Maintenance Repair Parts and Special Tools Lists: Distributor-Transmitter, Teletypewriter TT-122A/FG, and TT-123A/FG.

5. Location of Repair Parts

a. This manual contains three cross-reference indexes (sec. IV, VII, and IX) to be used to locate a repair part when either the Federal stock number or reference number (manufacturer's part number) is known. The first column in each index is prepared in numerical or alphanumeric or alphanumeric sequence in ascending order. Where a Federal stock number is not listed, refer to the reference number (manufacturer's part number) immediately following the Federal stock number.

b. When the Federal stock number or reference number is known, follow the procedures given in (1) And (2) below.

(1) Refer to the index of Federal Stock Numbers (sec. IV, VII, and IX) and locate the Federal stock number or reference number. The FSN and reference numbers are cross-referenced to the applicable figure and item number.

(2) Refer to the repair parts lists (sec. II, V, and VIII) and locate the figure number and item number as noted in the FSN index.

c. When the figure and item number are known, scrutinize columns 10a and 10b of the repair parts lists (sec. II, V, and VIII) until the item is located.

d. When the FSN, reference number, figure number or item number are not known, scrutinize column 3 of the repair parts list (sec. II, V, and VIII).

6. Federal Supply Code for Manufacturers

Code	Manufacturer
00779	AMP, Inc.
02735	RCA Corp., Solid State Division
04799	Transformer Design Inc. of Milwaukee
09922	Burdny Corp.
15605	Culter-Hammer, Inc.
21335	Fafnir Bearing Co., Division of Textron, Inc.
28520	Heyman Mfg. Co.
44655	Ohmite Mfg. Co.
59730	Thomas and Betts Co.
70485	Atlantic India Rubber Works, Inc.
71785	Cinch Mfg. Co.
72962	Elastic Stop Nut Corp. of America
75915	Littlefuse, Inc.
77147	Patton-MacGuyer Co., Division of Avid Co.
78189	Illinois Tool Works, Inc.
78553	Tinnerman Products, Inc.
80063	Army Electronics Command Procurement and Production Directorate
80069	RBN Div., Essex Wire Corp.
81041	Howard Industries, Inc.
81349	Military Specifications
82423	Kleinschmidt, Division of SCM Corp.
95348	Gordos Corp.
96906	Military Standards

7. Recommendations for Maintenance Publication Improvements

Report of errors, omissions, and recommendations for improving this publication by the individual user is encouraged. Reports should be submitted on DA Form 2028 (Recommended Changes to Publications and Blank Forms) and forwarded direct to Commander, US Army Electronics Command, DRSEL-MA-Q, Fort Monmouth, NJ 07703.

SECTION II REPAIR PARTS FOR DIRECT SUPPORT, GENERAL SUPPORT, AND DEPOT MAINTENANCE (TT-122A/FG)

(1) SMR CODE	(2) FEDERAL STOCK NUMBER	(3) DESCRIPTION USABLE ON CODE REF. NUMBER & MFR. CODE		(4) U N I T O F M E A S U R E M E N T	(5) QTY INC IN UNIT	(6) 30-DAY DS MAINT			(7) 30-DAY GS MAINT			(8) 1-YR	(9) DEPOT	(10) ILLUS- TRATION		
						ALLOWANCE			ALLOWANCE			ALW PER 100	MAINT ALW PER 100	(A)	(B)	
						(A)	(B)	(C)	(A)	(B)	(C)	EQUIP	EQUIP	FIG	ITEM	
						1-20	21-50	51-100	1-20	21-50	51-100	CNTGY	EQUIP	NO.	NO.	
XI-D	5815-557-6257	A001	DISTRIBUTOR-TRANSMITTER TELETYPEWRITER TT-122A/F2 (This item is expendable) (80058)	SET	1											
P-F	5305-616-2209	A002	DISTRIBUTOR-TRANS MITTER, TELETYPE WRITER 90/24A-19.00 (82423)	ea.	9	2	3	6	2	2	2	71	50	12	6,9,18,25	
P-F	5305-983-7427	A003	SCREW, CAP, SOC KET HEAD 1003 (82423)	ea.	3	2	3	6	2	2	2	71	50	12	47,52	
P-F	5305-286-2083	A004	SCREW, CAP, SOC RET HEAD MS516998-12 (96906)	ea.	1	2	2	2	*	2	2	19	10	12	12	
P-F	5305-985-0270	A005	SHREW, CAP, SOC KET HEAD 10055 (82423)	ea.	2	2	2	2	*	2	2	16	8	10	20	
P-F	5310-616-3555	A006	WASHER, LOCK MS35333-71 (96906)	ea.	9	2	2	2	2	2	2	27	15	12	24,29,36	
P-F		A008	WASHER, LOCK MS35337-60 (96906)	ea.	4	*	2	2	*	2	2	13	6	12	48,53	
P-F		A009	WASHER, LOCK MS35339-60 (96906)	ea.	9	2	3	4	2	2	2	46	30	12	7,10,26,39	
P-P	5310-576-1352	A010	WASHER, LOCK MS35340-62 (96906)	ea.	2	*	*	*	*	*	*	5	2	10	15	
P-F	3110-144-8865	A011	BEARING, BALL, ANNULAR 39KDDF3160 (21335)	ea.	2	*	*	2	*	*	2	10	4	10	18,22	
P-F	5315-839-2326	A012	PIN, COTTER MS24665-281 (96906)	ea.	2	*	*	2	*	*	2	10	4	10	2,4	
P-F		A013	SCREW, MACHINE 12354 (82423) (82423)	ea.	3	*	*	2	*	*	*	8	3	12	23	
P-F	5305-842-1427	A014	SCREW, MACHINE 12393 (82423)	ea.	6	2	2	2	2	2	2	27	15	12	28,35	
P-F	5310-209-1366	A015	WASHER, LOCK MS35335-58 (96906)	ea.	2	2	2	2	2	2	2	27	15	12	13	
P-F	5930-786-4040	A016	SWITCH, TOGGLE 8823K6 (15605)	ea.	1	*	*	3	*	*	*	8	3	12	31	
P-F	5945-681-0330	A017	RELAY, ARMATURE 91252-101 (80069)	ea.	1	*	*	*	*	*	*	5	2	12	27	
P-F		A018	TERMINAL BOARD 41403/4WAEX (71785)	ea.	1	*	*	*	*	*	*	4	1	12	55	
M-D		A019	PLATE, DESIG NATION. MSY4140 (71785)	ea.	1									12	56	
P-F		A020	FUSEHOLDER 340121 (75915)	ea.	1	*	*	2	*	*	*	10	4	12	42	
XI-F		A021	WASHER, LOCK 10439 (82423)	ea.	1									12	40	
XI-F		A022	WASHER, NON METALLIC 10484 (82423)	ea.	1									12	41	
P-O	5920-244-5150	A023	CAP, FUSEHOLDER 3420035A2 (75915)	ea.	1	*	2	2	*	2	2	13	6	12	37	
XI-F		A024	FUSEHOLDER 342003SA1 (75915)	ea.	1									12	42	

SECTION II REPAIR PARTS FOR DIRECT SUPPORT, GENERAL SUPPORT, AND DEPOT MAINTENANCE (CONTINUED)

(1) SMR CODE	(2) FEDERAL STOCK NUMBER	(3) DESCRIPTION USABLE ON CODE REF. NUMBER & MFR. CODE		(4) U N I T O F M E A S U R E M E N T	(5) QTY INC IN UNIT	(6) 30-DAY DS MAINT			(7) 30-DAY GS MAINT			(8) 1-YR	(9) DEPOT	(10) ILLUS- TRATION	
						ALLOWANCE			ALLOWANCE			ALW PER 100	MAINT ALW PER	(A)	(B)
						(A)	(B)	(C)	(A)	(B)	(C)	EQUIP	100	FIG	ITEM
						1-20	21-50	51-100	1-20	21-50	51-100	CNTGY	EQUIP	NO.	NO.
P-F		A025	FUSEHOLDER SAME AS A020	ea.	1	REF	REF	REF	REF	REF	REF	REF	REF	12	42
XI-F		A026	WASHER, LOCK SAME AS A021	ea.	1									12	40
X1-F		A027	WASHER, NON METALLIC SAME AS A022	ea.	1									12	41
P-0	5920-214-5150	A028	CAP, FUSEHOLDER SAME AS A023	ea.	1	REF	REP	REF	REF	REF	REF	REF	REF	12	37
XI-F		A029	FUSEHOLDER SAME AS A024	ea.	1									12	42
P-0	5920-794-3215	A030	FUSE, CARTRIDGE F02E250V1A (81349)	ea.	2	7	18	33	5	7	8	400	350	12	38
P-0	5920-794-3215	A031	FUSE, CARTRIDGE SAME AS A030	ea.	REF	REF	REF	REF	REF	REF	REF	REF	REF	12	38
XI-F		A032	CLAMP, LOOP C3046A635 (78553)	ea.	1									12	8
X2-F	5340-399-7867	A037	CLAMP, LOOP C3049A3108 (78553)	ea.	2									12	11
P2-F	5975-273-0788	A074	BUSHING, STRAIN RELIEF SR6P (28520)	ea.	2									12	44,45
P-F	5940-581-3178	A035	TERMINAL BOARD 61403/4 WAX (71785)	ea.	1	*	*	*	*	*	*	4	1	12	50
M-D		A036	PLATE, DESIG NATION 21041 (82423)	ea.	1									12	31
P-F	5310-638-5178	A037	WASHER, FLAT 5C869322-6 (80063)	ea.	1	*	*	*	*	*	*	4	1	10	19
P-F	5815-697-7890	A038	GEAR, WORMWHEEL SMB196685 (80063)	ea.	1	*	*	*	*	*	*	5	2	10	16
P-F	5815-534-3010	A039	GEAR, WORM SMB196134 (80063)	EA.	1	*	*	*	*	*	*	4	1	10	3
P-F	5815-534-3011	A040	GEAR, WORMWHEEL SMS196135 (80063)	ea.	1	*	*	*	*	*	*	5	2	10	5
P-F	5910-742-3532	A041	CAP, FIXED, PAP ER, DIELECTRIC 53744 (82423)	ea.	1	*	*	*	*	*	*	5	2	12	21
M-D		A042	BRACKET SMB149043 (80063)	ea.	2									12	20
P-F	5310-521-8552	A043	KEY, MACHINE SMB186915 (80063)	ea.	5	*	2	2	*	2	2	12	5	10	17
P-F	5306-600-3058	A044	SCREW, CAP, SOC KET HEAD 51B196656 (80063)	ea.	2	*	*	2	*	*	2	10	4	10	14
P-F	5995-650-2521	A045	CABLE ASSEMBLY, AC SMB314911 (80063)	ea.	1	*	*	*	*	*	*	5	2	12	14
P-F	5935-201-7941	A046	PLUG, TELEPHONE PJO55GY (81349)	ea.	1	*	*	*	*	*	*	5	2	12	
XI-F		A047	CABLE, POWER ELECTRICAL 20636-83.00 (82423)	ea.	1									12	
P-F	5940-680-9738	A038	TERMINAL LUG YAE1422 (09922)	ea.	2	2	2	2	*	2	2	16	8	12	
X-D		A049	COVER, TELETYPE WRITER SMC31472 (80063)	ea.	1									10	9

SECTION II REPAIR PARTS FOR DIRECT SUPPORT, GENERAL SUPPORT, AND DEPOT MAINTENANCE (CONTINUED)

(1) SMR CODE	(2) FEDERAL STOCK NUMBER	(3) DESCRIPTION USABLE ON CODE REF. NUMBER & MFR. CODE		(4) U N I T O F M E A S	(5) QTY INC IN UNIT	(6) 30-DAY DS MAINT			(7) 30-DAY GS MAINT			(8)	(9)	(10) ILLUS- TRATION	
						ALLOWANCE			ALLOWANCE			1-YR	DEPOT	(A)	(B)
						(A)	(B)	(C)	(A)	(B)	(C)	ALW PER 100	MAINT ALW PER		
						1-20	21-50	51-100	1-20	21-50	51-100	EQUIP	100	FIG	ITEM
						CNTGY	EQUIP	EQUIP	NO.	NO.					
P-F	5305-594-1028	A050	SCREW, SHOULDERED SMB157319 (80063)	ea.	3	*	2	2	*	2	2	13	6	10	1
X1-D		A051	COVER SMC331507 (80063)	ea.	1									10	
X2-F	9320-125-8814	A052	CHANNEL, RUBBER SMB331481 (80063)	ea.	2									10	7
X2-F	5325-875-7150	A053	GROMMET, RUBBER SMB331482 (80063)	ea.	3									10	6
M-D		A054	PLATE, DESIGNATION SMC331509 (80063)	ea.	1									12	46
P-F	5815-608-8707	A055	SHAFT SMB331484 (80063)	ea.	1	*	*	*	*	*	*	5	2	12	2
A-F		A056	CABLE ASSEMBLY SMB331485 (80063)	ea.	1									12	15
P-F	5310-616-3555	A057	WASHER, LOCK SAME AS A007	ea.	1	REF	REF	REF	REF	REF	REF	REF	REF	12	
P-F		A058	CONNECTOR, PLUG UP121M (81349)	ea.	1	*	*	2	*	*	*	8	3	12	
P-F	6145-660-9321	A059	CABLE, ROVER, ELECTRICAL CO-02MFG(2/18)SJ0375 (81349)	ea.	1	*	2	2	*	2	2	12	5	12	
P-F	5940-204-8990	A060	TERMINAL LUG C33 (59730)	ea.	1	*	2	2	*	2	2	12	5	12	
P-F	5940-501-7769	A061	TERMINAL LUG 33457 (00779)	ea.	1	*	2	2	*	2	2	12	5	12	
P-F	5940-680-9738	A062	TERMINAL LUG SAME AS A048	ea.	2	REF	REF	REF	REF	REF	REF	REF	REF	12	
P-F	5815-609-9665	A063	GEAR, SPUR SMB331487 (80063)	ea.	1	*	*	*	*	*	*	5	2	10	21
M-F		A064	PLATE, DESIGNATION SMB331489 (80063)	ea.	1									12	34
XI-D		A065	BASE, UNIT SMD331512 (80063)	ea.	1									10	24
M-D		A066	WIRING HARNESS, BRANCHED SMC331516 (80063)	ea.	1									12	16
P-F	5940-204-8966	A067	TERMINAL LUG 31832 (00779)	ea.	4	2	2	2	*	2	2	16	8	12	
X2-F	5340-801-8903	A068	BUTTON, PLUG SMB331498 (80063)	ea.	1									12	43
2-FP		A069	RUBBER, SOLID SMB331517 (80063)	ea.	2									12	22
M-D		A070	COVER, SHIELD SMB331501 (80063)	ea.	1									12	4
P-F	5305-286-2083	A071	SCREW, CAP, SOC KET HEAD SAME AS A005	ea.	4	REF	REF	REF	REF	REF	REF	REF	REF	12	1
P-F		A072	WASHER, LOCK SAME AS A009	ea.	4	REF	REF	REF	REF	REF	REF	REF	REF	12	2
P-F	5310-227-6574	A073	WASHER, FLAT 10450 (82423)	ea.	4	*	2	2	*	2	2	15	7	12	3
P-F	5310-209-1366	A074	WASHER, LOCK SAME AS A015	ea.	4	REF	REF	REF	REF	REF	REF	REF	REF	12	5

SECTION II REPAIR PARTS FOR DIRECT SUPPORT, GENERAL SUPPORT, AND DEPOT MAINTENANCE (CONTINUED)

(1) SMR CODE	(2) FEDERAL STOCK NUMBER	(3) DESCRIPTION USABLE ON CODE REF. NUMBER & MFR. CODE		(4) U N I T O F M E A S	(5) QTY INC IN UNIT	(6) 30-DAY DS MAINT			(7) 30-DAY GS MAINT			(8)	(9)	(10) ILLUS- TRATION		
						ALLOWANCE			ALLOWANCE			1-YR	DEPOT	(A)	(B)	
						(A)	(B)	(C)	(A)	(B)	(C)	ALW PER 100	MAINT ALW PER			
						1-20	21-50	51-100	1-20	21-50	51-100	EQUIP	100	FIG	ITEM	
						CNTGY	EQUIP	EQUIP	NO.	NO.						
X1-F		A075	DISTRIBUTOR, TRANSMITTER 63293A	(82423)	ea.	1										1
P-F	5305-297-9584	A076	SCREW, CAP, SOC KET HEAD 10030	(82423)	ea.	2	*	*	2	*	*	2	10	4	9	1
P-F	5310-543-5933	A077	WASHER, LOCK MS35333-73	(96906)	ea.	2	*	*	*	*	*	*	5	2	9	2
P-F	5305-521-8637	A078	SCREW, CAP, SOC KET HEAD 10030	(82423)	ea.	2	*	*	2	*	*	2	10	4	5	33
P-F	5305-016-2269	A079	SCREW, CAP, SOC KET HEAD SAME AS A003		ea.	13	REF	REF	REF	REF	REF	REF	REF	REF	2 3 5 6 7 8	8 9 31 21 1 6,18
P-F	5305-983-6649	A080	SCREW, CAP, SOC KET HEAD MS16998-10	(96906)	ea.	2	2	2	2	*	2	2	16	8	6	13
P-F	5305-286-2083	A081	SCREW, CAP, SOC KET HEAD SAME AS A005		ea.	1	REF	REF	REF	REF	REF	REF	REF	REF	8	15
P-F	5305-014-0853	A082	SETSCREW MS51019-34	(96906)	ea.	1	*	*	2	*	*	2	10	4	8	29
P-F	5305-616-6382	A083	SETSCREW 10208	(82423)	ea.	2	*	*	2	*	*	2	10	4	6	4
P-F	5305-985-0270	A084	SETSCREW SAME AS A006		ea.	2	REF	REF	REP	REF	REF	REF	REF	REF	6	10
P-F	5305-297-7905	A085	SETSCREW MS51020-49	(96906)	ea.	2	*	*	2	*	*	2	10	4	5	24,29
P-F	5305-408-0044	A086	SETSCREW MS51028-55	(96906)	ea.	2	2	2	2	*	2	2	16	8	1	26,27
P-F	5305-297-7721	A087	SCREW, MACHINE 10398	(82423)	ea.	1	*	*	*	*	*	*	5	2	2	10
P-F		A088	WASHER, LOCK SAME AS A009		ea.	17	REF 3	REF 8,10	REF	REF	REF	REF	REF	REF	2	9
P-F	5310-227-6574	A089	WASHER, FLAT SAME AS A073		ea.	3	REF	REF	REF	REF	REF	REF	REF	REF	5 6 8	32,34 14,22 5,19
P-F	5310-595-5969	A090	WASHER, FLAT 10459	(82423)	ea.	2	*	*	*	*	*	*	2	5	5	41
P-F	5310-600-282B	A091	NUT, SELF-LOCKING, HEXAGON F22NTM60	(72962)	ea.	1	*	*	*	*	*	*	4	1	3	5
P-F	5310-595-1114	A092	NUT, PLAIN, HEXAGON 10504	(82423)	ea.	2	*	*	2	*	*	2	10	4	2	1,2
P-F	5310-176-8119	A091	NUT, PLAIN, HEXAGON 10509	(82423)	ea.	3	*	2 5	2 37	*	2	2	13	6	4	3,4
P-F	5310-297-8940	A094	NUT, PLAIN, HEXAGON 10512	(82423)	ea.	1	*	*	*	*	*	*	5	2	8	4
P-F	3110-155-9628	A095	BEARING, BALL ANNULAR S1KDD7FS160	(21335)	ea.	2	*	*	2	*	*	2	10	4	6	24,26
P-F	5340-282-2426	A096	RING, RETAINING MS16633-3018	(96906)	ea.	10	2	3	6	2	2	2	71	50	3	1,3,14, 16,17,21 2,27 27

SECTION II REPAIR PARTS FOR DIRECT SUPPORT, GENERAL SUPPORT, AND DEPOT MAINTENANCE (CONTINUED)

(1) SMR CODE	(2) FEDERAL STOCK NUMBER	(3) DESCRIPTION USABLE ON CODE REF. NUMBER & MFR. CODE	(4) U N I T O F M E A S	(5) QTY INC IN UNIT	(6) 30-DAY DS MAINT			(7) 30-DAY GS MAINT			(8)	(9)	(10) ILLUS- TRATION	
					ALLOWANCE			ALLOWANCE			1-YR	DEPOT	(A)	(B)
					(A)	(B)	(C)	(A)	(B)	(C)	ALW PER 100	MAINT ALW PER		
					1-20	21-50	51-100	1-20	21-50	51-100	EQUIP	100	FIG	ITEM
						CNTGY	EQUIP	NO.	NO.					
P-F	5340-205-6552	A097 RING, RETAINING MS16633-3025 (96906)	ea.	5	2	2	3	*	2	2	40	25	48,9,10,11,12	
P-F	5340-514-1811	A098 RING, RETAINING MS16633-3012 (96906)	ea.	2	2	2	2	*	2	2	19	10	2 3,4	
P-F		A099 SCREW, MACHINE 12301 (82423)	ea.	4	2	2	2	*	2	2	19	10	8 12	
P-F		A100 SCREW, MACHINE 12308 (82423)	ea.		1	*	*	*	*	*	*	2	7 7	
P-F	5305-926-5657	A101 SCREW, MACHINE 12359 (82423)	ea.	1	*	*	*	*	*	*	5	2	3 7	
P-F	A102	SCREW, MACHINE 12385 (82423)	ea.	1	*	*	*	*	*	*	5	2	3 6	
P-F	5310-209-1366	A103 WASHER, LOCK SAME AS A015	ea.	11	REF	REF	REF	REF	REF	REF	REF	REF	7 2,8 8 13,16	
P-F	5930-548-4893	A104 SWITCH, SENSITIVE SMB187666 (80063)	ea.	1	*	2	2	*	2	2	12	5	3 11	
M-D		A105 PLATE, DESIGNATION MSX11172 (71785)	ea.	1									8 11	
X2-F		A106 CLAMP, LOOP C3044F135 (78553)	ea.	1									3 13	
X2-F	5340-399-7867	A107 CLAMP, LOOP SAME AS A033	ea.	1									8 7	
P-F	5940-804-0365	A108 TERMINAL LUG 321021 (00779)	ea.	3	*	2	2	*	2	2	13	6	7 20,21	
P-F	5815-521-8475	A109 WASHER, THRUST	ea.	6	*	2	2	*	2	2	13	6	5 3,6,9, 15,18,21	
P-F	SCB69389-4 5815-356-3307	(80063) A110 POST, ANCHOR SMB148337 (80063)	ea.	2	*	2	2	*	2	2	13	6	4 5 5 38	
P-F	5815-598-4965	A111 SPRING, HELICAL EXTENSION SMB186883 (80063)	ea.	7	2	2	2	2	2	2	27	15	5 1	
P-F	5815-356-3494	A112 SPRING, HELICAL EXTENSION SCB69337-14 (80063)	ea.	1	*	*	*	*	*	*	5	2	7 6	
P-F	5310-205-8930	A113 WASHER, FLAT SCB69389-8 (80063)	ea.	*	*	*	*	*	*	*	4	1	6 12	
P-F	5815-336-3515	A11 CONTACT ASSEMBLY, ELECTRICAL SMB148371 (80063)	ea.	1	*	*	*	*	*	*	5	2	7 9	
P-F	5340-282-2426	A115 RING, RETAINING SAME AS A096	ea.	1	REF	REF	REF	REF	REF	REF	REF	REF	7 16	
X1-F		A116 TERMINAL LUG 3027 (77147)	ea.	1									7 19	
P-F	5815-356-3519	A117 LEVER UNIT SCB70112 (80063)	ea.	1	*	*	*	*	*	*	5	2	5 4	
A-F		A118 CONTACT ASSEMBLY, ELECTRICAL SCB69876 (80063)	ea.	1									7	
P-F	5305-721-3054	A119 SCREW, CAP, SOC KET HEAD 10009 (82423)	ea.	2	*	*	2	*	*	2	10	4	7 4	
P-F	5310-721-7810	A120 WASHER, LOCK MS35339-61 (96906)	ea.	2	*	*	2	*	*	2	10	4	7 5	
P-F	5310-616-3555	A121 WASHER, LOCK SAME AS A007	ea.	2	REF	REF	REF	REF	REF	REF	REF	REF	7 11	
P-F		A122 SCREW, MACHINE SAME AS A099	ea.	2	REF	REF	REF	REF	REF	REF	REF	REF	7 10	

SECTION II REPAIR PARTS FOR DIRECT SUPPORT, GENERAL SUPPORT, AND DEPOT MAINTENANCE (TT-122A/FG)

(1) SMR CODE	(2) FEDERAL STOCK NUMBER	(3) DESCRIPTION USABLE ON CODE REF. NUMBER & MFR. CODE		(4) U N I T O F M E A S	(5) QTY INC IN UNIT	(6) 30-DAY DS MAINT			(7) 30-DAY GS MAINT			(8)	(9)	(10) ILLUS- TRATION	
						ALLOWANCE			ALLOWANCE			1-YR	DEPOT	(A)	(B)
						(A)	(B)	(C)	(A)	(B)	(C)	ALW PER 100	MAINT ALW PER		
						1-20	21-50	51-100	1-20	21-50	51-100	EQUIP	100	FIG	ITEM
						CNTGY	EQUIP	NO.	NO.						
P-F	5815-384-0887	A123	CONTACT, ELECTRICAL SCB69990 (80063)	ea.	2	*	*	2	*	*	2	10	4	7	13
X1-F		A124	LEAD, ELECTRICAL SCB70061 (80063)	ea.	2									7	14
X2-F	5815-356-3517	A125	HOLDER, ELECTRICAL SC8186884 (80063)	ea.	1									7	15
P-F	5815-356-3518	A126	TERMINAL LUG SCB69846 (80063)	ea.	2	*	*	2	*	*	2	10	4	7	12
P-F	5815-330-9941	A127	BEARING SET SCB69494 (80063)	ea.	1		*	*	*	*	*	4	1	5	5
X2-F	5940-946-2435	A128	TERMINAL BOARD SMB157032 (80063)	ea.	1									8	10
X2-F	5305-660-1939	A129	SCREW, MACHINE 10358 (82423)	ea.	4									8	8
P-F	5310-545-8406	A130	WASHER, SHIM SMB157208 (80063)	ea.		1*	*	*	*	*	*	4	1	6	20
P-F	5815-677-4455	A131	SHAFT SMB157399 (80063)	ea.	1	*	*	*	*	*	*	4	1	2	5
X2-F	5815-392-7847	A132	COVER, SWITCH SMB157346 (80063)	ea.	1								7	3	
P-F	5815-392-7849	A133	LEVER SMB001349 (80063)	ea.	1	*	*	*	*	*	*	4	1	3	34
P-F	5815-392-7850	A134	LEVER SMB157350 (80063)	ea.	1		*	*	*	*	*	4	1	3	19
P-F	5815-392-7854	A135	LEVER SMB157359 (80063)	ea.	1	*	*	*	*	*	*	4	1	2	7
P-F	5945-259-6126	A136	RELAY, ARMATURE SMB157362 (80063)	ea.	1	*	*	*	*	*	*	5	2	8	28
P-F	5815-392-7853	A137	LEVER SMB157363 (80063)	ea.	1	*	*	*	*	*	*	5	2	4	14
P-F	5815-092-1440	A138	SPACER, SLEEVE SMB157014-13 (80063)	ea.	1	*	*	*	*	*	*	4	1	5	12
P-F	5815-392-7857	A139	BEARING, SLEEVE SMB157367 (80063)	ea.	1	*	*	*	*	*	*	4	1	5	23
P-F	5815-392-7858	A140	PIN, HEADLESS SMB157368 (80063)	ea.	1	*	*	*	*	*	*	4	1	4	13
P-F	5815-030-0432	A141	CLAW, TAPE FEED SMB157369 (80063)	ea.	*	*	*	*	*	*	*	4	1	4	19
P-F	5815-219-7019	A142	STUD, ECCENTRIC SMB157370 (80063)	ea.	1	*	*	2	*	*	*	8	3	8	30
P-F	5815-392-2859	A143	PIN, STRAIGHT, HEADLESS SMB157371 (80063)	ea.	1	*	*	*	*	*	*	5	2	7	18
P-F	5815-392-7860	A144	PIN, STRAIGHT, HEADLESS SMB157372 (80063)	ea.	1	*	*	*	*	*	*	5	2	7	25
P-F	5815-392-7861	A145	BRACKET, GUIDE SBM157373 (80063)	ea.	1	*	*	*	*	*	*	4	1	5	36
P-F	5815-392-7862	A146	PIN, STRAIGHT, HEADLESS SMB157374 (80063)	ea.	1	*	*	*	*	*	*	4	1	5	3
P-F	5815-649-9289	A147	LEVER UNIT IDENTICAL SMB157375 (80063)	ea.	2	*	*	*	*	*	*	5	2	4	16
P-F	5815-392-7864	A148	LEVER SMB157377 (80063)	ea.	1	*	*	*	*	*	*	4	1	5	28

SECTION II REPAIR PARTS FOR DIRECT SUPPORT, GENERAL SUPPORT, AND DEPOT MAINTENANCE (TT-122A/FG)

(1) SMR CODE	(2) FEDERAL STOCK NUMBER	(3) DESCRIPTION USABLE ON CODE REF. NUMBER & MFR. CODE		(4) U N I T O F M E A S	(5) QTY INC IN UNIT	(6) 30-DAY DS MAINT			(7) 30-DAY GS MAINT			(8) 1-YR	(9) DEPOT	(10) ILLUS- TRATION	
						ALLOWANCE			ALLOWANCE			ALW	MAINT	(A)	(B)
						(A)	(B)	(C)	(A)	(B)	(C)	PER	ALW		
						1-20	21-50	51-100	1-20	21-50	51-100	100	PER	FIG	ITEM
P-F	5305-393-1917	A149	STUD, EXTENSION SMB157382 (80063)	ea.	2	*	*	*	*	*	*	5	2	9	3
X2-F	5815-392-7866	A150	COLLAR SMB157383 (80063)	ea.	1									6	25
P-F	5815-302-7867	A151	LEVER SMB157386 (80063)	ea.		1	*		*		*	5	2	4	15
P-F	5815-392-7868	A152	GUIDE, LEVER SMB157389 (80063)	ea.		1	*	*	*	*	*	4	1	2	12
P-7	5815-392-7869	A153	LEVER SMC157390 (80063)	ea.	1	*	*	*	*	*	*	4	1	3	15
X2-F	5815-650-4392	A154	BRACKET SMB157393 (80063)	ea.	1									8	21
P-F	5815-392-7870	A155	CAM SMB157394 (80053)	ea.	1	*	*	*	*	*	*	4	1	6	15
P-F	5815-099-0653	A156	CAM SMB157395 (80063)	ea.	1		*	*	*	*	*	4	1	6	17
X2-F	5815-392-7871	A157	BRACKET SM1857396 (80063)	ea.	1									8	20
P-F	5815-393-1919	A158	CAMSHAFT ASSEMBLY SMC157656 (80063)	ea.	1	*	*	*	*	*	*	5	2	6	19
X2-F	5315-597-9673	A159	PIN, GROOVED, HEADLESS SMB157398 (80063)	ea	1									3	18
P-F	5815-597-2285	A160	SPRING HELICAL EXTENSION SMB157010-11 (80063)	1	*	*	*	*	*	*	*	5	2	3	20
P-F	5340-597-9492	A161	SPRING, HELICAL SMB157010-12 (80063)	ea.	4	*	*	*	*	*	*	5	2	5	26
P-F	5815-597-2275	A162	SPRING, HELICAL SMB157010-13 (80063)	ea.	5	2	2	2	*	2	2	19	10	4	1
P-F	5340-597-2288	A163	SPRING, HELICAL EXTENSION SMB157010-14 (80063)	ea.	1	*	2	2	*	2	2	12	5	4	6
P-F	5815-597-2290	A164	SPRING, HELICAL EXTENSION SMB157010-15 (80063)	ea.	1	*	*	*	*	*	*	5	2	4	2
P-F	5815-200-7858	A165	SPRING, HELICAL EXTENSION SMB157010-16 (80063)	ea.	1	*	2	2	*	2	2	12	5	8	26
P-F	5815-597-7563	A166	SPRING, HELICAL TORSION SMB157407 (80063)	ea.	1	*	*	*	*	*	*	5	2	2	6
M-H		A167	CABLE ASSEMBLY, ELECTRICAL SMB157470 (80063)	ea.	1									3	12
P-F	5940-504-5787	A168	TERMINAL LUG 321035 (00779)	ea.	2	2	2	2	*	2	2	19	10	3	
M-F		A169	LEAD, ELECTRICAL SMB314931 (80063)	ea.	1									8	2
P-F	5940-504-5787	A170	TERMINAL LUG SAME AS A168	ea.	1	REF	REF	REF	REF	REF	REF	REL	REF	8	
M-F		A171	LEAD, SMB314932 (80063)	ea.	1		1							8	1
P-F	5940-504-5787	A172	TERMINAL LUG SAME AS A168	ea.	4	REF	REF	REF		REF	REF	REF	REF	REF	8

SECTION II REPAIR PARTS FOR DIRECT SUPPORT, GENERAL SUPPORT, AND DEPOT MAINTENANCE (CONTINUED)

(1) SMR CODE	(2) FEDERAL STOCK NUMBER	(3) DESCRIPTION USABLE ON CODE REF. NUMBER & MFR. CODE	(4) U N I T O F M E A S U R E M E N T	(5) QTY INC IN UNIT	(6) 30-DAY DS MAINT			(7) 30-DAY GS MAINT			(8) 1-YR	(9) DEPOT	(10) ILLUS- TRATION	
					ALLOWANCE			ALLOWANCE			ALW	MAINT	(A)	(B)
					(A)	(B)	(C)	(A)	(B)	(C)	PER	ALW		
					1-20	21-50	51-100	1-20	21-50	51-100	100	PER	FIG	ITEM
M-F		A173 LEAD, ELECTRICAL SMB314933 (80063)	ea.	1									8	3
P-F	5940513-5767	A174 TERMINAL LUG SAME AS A168	ea.	1	REF	REF	REF	REF	REF	REF	REF	REF	8	
P-F	5815-537-7682	A175 LEVER SMB157516 (80063)	ea.	1		*	*	*	*	*	5	2	5	22
P-F	5815-790-3260	A176 LEAD, ELECTRICAL SMB157532 (80063)	ea.	1		*	*	*	*	*	5	2	8	17
X1-F		A177 TERMINAL LUG 34122 (00779)	ea.	2									8	
X2-H	5815-617-4429	A178 COVER, TELETYPE WRITER SMB331454 (80063)	ea.	1									1	11
P-F	5310-616-3555	A179 WASHER, LOCK SAME AS A007	ea.	4	REF	REF	REF	REF	REF	REF	REF	REF	1	8
P-F		A180 SCREW, MACHINE 12357 (82423)	ea.	2	2	2	2	*	2	2	16	8	1	7
P-F	5305-842-1427	A181 SCREW, MACHINE SAME AS A014	ea.	2	REF	REF	REF	REF	REF	REF	REF	REF	6	34
P-F	5325-174-5317	A182 GROMMET, SLEEVE MS35489-4 (96906)	ea.	4	*	2	2	*	2	2	13	6	1	10
P-F	5815-692-6842	A183 BUSHING, SLEEVE SMB157388 (80063)	ea.	4	*	2	2	*	2	2	13	16	1	9
X2-H	5815-617-6340	A184 COVER, TELETYPE WRITER SMB331456 (80063)	ea.	1									1	6
P-F	5915-501-0546	A185 FILTER SMC157655 (80063)	ea.	1	*	*	*	*	*	*	4	1	8	14
P-F	5815-322-5581	A186 COLLAR, TANG SMB171537 (80063)	ea.	1	*	*	*	*	*	*	5	2	6	5
P-F	5815-840-3720	A187 DISK, FRICTION SMB186882 (80063)	ea.	1	*	*	*	*	*	*	4	1	6	6
P-F	5815-663-3296	A188 SPRING, HELICAL COMPRESSION SMB171534 (80063)	ea.	1*	*	*	*	*	*	*	5	2	6	3
P-F	5815-322-5609	A189 LATCH, STOP SMB171361 (80063)	ea.	1	*	*	*	*	*	*	4	1	5	35
P-F	5310-531-8631	A190 WASHER, FLAT SMB187268 (80063)	ea.	2	*	*	*	*	*	*	5	2	3	28,29
P-F	5330-641-3180	A191 WASHER, NON METALLIC SMB187300 (80063)	ea.	1	*	*	*	*	*	*	5	2	2	13
P-F	5815-570-3493	A192 SPACER SMB31417 (80063)	ea.	2	*	*	*	*	*	*	5	2	6	16,18
P-F	5815-600-3005	A193 COLLAR, SHAFT SMB314726 (80063)	ea.	1	*	*	*	*	*	*	4	1	6	2
P-F	5305-297-7965	A194 SCREW, CAP, SOC KET HEAD 10043 (82423)	ea.	2	*	*	2	*	*	2	10	4	6	1
P-F	5815-588-0944	A195 LEVER ASSEMBLY SMB314761 (80063)	ea.	1	*	*	*	*	*	*	4	1	3	22
P-F	5815-608-8708	A196 SHAFT, CLUTCH SMB331524 (80063)	ea.	1	*	*	*	*	*	*	4	1	6	11
P-F		A197 GEAR, SPUR SMB331527 (80063)	ea.	1	*	*	2	*	*	*	8	3	6	8

SECTION II REPAIR PARTS FOR DIRECT SUPPORT, GENERAL SUPPORT, AND DEPOT MAINTENANCE (CONTINUED)

(1) SMR CODE	(2) FEDERAL STOCK NUMBER	(3) DESCRIPTION USABLE ON CODE REF. NUMBER & MFR. CODE		(4) U N I T O F M E A S	(5) QTY INC IN UNIT	(6) 30-DAY DS MAINT			(7) 30-DAY GS MAINT			(8)	(9)	(10) ILLUS- TRATION	
						ALLOWANCE			ALLOWANCE			1-YR	DEPOT	(A)	(B)
						(A)	(B)	(C)	(A)	(B)	(C)	ALW PER 100	MAINT ALW PER		
						1-20	21-50	51-100	1-20	21-50	51-100	EQUIP	100	FIG	ITEM
						CNTGY			EQUIP	EQUIP	NO.	NO.			
M-H		A198	WIRING HARNESS, BRANCHED SMC331463 (80063)	ea.	1									12	17
P-F	5940-231-4430	A199	TERMINAL LUG 32561 (00779)	ea.	4	2	2	2	*	2	2	16	8	12	
P-F	5940-504-5787	A200	TERMINAL LUG SAME AS A168	ea.	4	REF	REF	REF	REF	REF	REF	REF	REF	12	
P-F	5815-084-0232	A201	LEVER SMC331464 (80061)	ea.	1	*	*	*	*	*	*	4	1	3	2
X2-F	5815-393-1918	A202	PLATE, DESIGNATION SMB331465 (80063)	ea.	1									2	3
P-F	5310-616-3555	A203	WASHER, LOCK SAME AS A007	ea.	2	REF	REF	REF	REF	REF	REF	REF	REF	2	2
P-F		A204	SCREW, MACHINE SAME AS A180	ea.	2	REF	REF	REF	REF	REF	REF	REF	REF	2	1
P-F	5325-174-5317	A205	GROMMET, SLEEVE SAME AS A182	ea.	2	REF	REF	REF	REF	REF	REF	REF	REF	2	2
P-F	5815-692-6842	A206	BUSHING, SLEEVE SAME AS A183	ea.	2	REF	REF	REF	REF	REF	REF	REF	REF	1	3
P-F	5950-609-4145	A47	COIL, ELECTROMAGNETIC ACTUATOR SMB331466 (80063)	ea.	1	*	*	*	*	*	*	5	2	8	25
P-F	5305-206-2476	A208	SCREW, CAP, SOCK KET HEAD 10010 (82423)	ea.	2	*	*	2	*	*	2	10	4	8	22
P-F	5310-721-7810	A209	WASHER, LOCK SAME AS A120	ea.	2	REF	REF	REF	REF	REF	REF	REF	REF	8	23
P-F	5310-209-0574	A210	WASHER, FLAT 10454 (82423)	ea.	2	*	*	*	*	*	*	5	2	8	24
P-F	5940-504-5787	A211	TERMINAL LUG SAME AS A168	ea.	2	REF	REF	REF	REF	REF	REF	REF	REF	8	
X-D		A212	FRAME, TRANSMITTER DISTRIBUTOR	ea.	1									9	12
P-F	5330-776-2693	A213	FELT, MECHANIC AL, PREFORMED 61344A (82423)	ea.	2	2	2	3	2	2	2	33	20	6	7,9
P-F	5330-735-3438	A214	FELT SMB321675 (80063)	ea.	1	*	2	2	*	2	2	12	5	4	22
P-F	5330-841-7418	A215	FELT, MECHANIC AL, PREFORMED SMB321683 (80063)	ea.	7	*	2	2	*	2	2	15	7	3 5	23,24,26 40
P-F	5330-844-0679	A216	WASHER, NON METALLIC 61477 (82423)	ea.	1	*	*	*	*	*	*	4	1	3	25
P-F	5330-841-6380	A217	WASHER, NONMETALLIC SMB321688 (80063)	ea.	1	*	*	*	*	*	*	4	1	5	39
P-F	5815-019-0094	A218	COVER ASSEMBLY 65470A (82423)	ea.	1	*	*	*	*	*	*	*	4	1	1
P-F	5305-6516-2209	A219	SCREW, CAP, SOC KET HEAD SAME AS A003	ea.	2	REF	REF	REF	REP	REF	REF	REF	REF	1	22
P-F	5305-983-7427	A220	SCREW, CAP, SOC KET HEAD SAME AS A004	ea.	1	REF	REF	REF	REF	REF	REF	REF	REF	1	24
P-F		A221	WASHER, LOCK SAME AS A009	ea.	3	REF	REF	REF	REF	REF	REF	REF	REF	1	23,25

SECTION II REPAIR PARTS FOR DIRECT SUPPORT, GENERAL SUPPORT, AND DEPOT MAINTENANCE (CONTINUED)

(1) SMR CODE	(2) FEDERAL STOCK NUMBER	(3) DESCRIPTION USABLE ON CODE REF. NUMBER & MFR. CODE		(4) U N I T O F M E A S U R E M E N T	(5) QTY INC IN UNIT	(6) 30-DAY DS MAINT			(7) 30-DAY GS MAINT			(8) 1-YR	(9) DEPOT	(10) ILLUS- TRATION	
						ALLOWANCE			ALLOWANCE			ALW	MAINT	(A)	(B)
						(A)	(B)	(C)	(A)	(B)	(C)	PER	ALW		
						1-20	21-50	51-100	1-20	21-50	51-100	100	PER	FIG	ITEM
P-F	5305-983-6649	A222	SCREW, CAP, SOC KET HEAD SAME AS A080	ea.	2	REF	REF	REF	REF	REF	REF	REF	REF	1	28
P-F	5305-014-0853	A223	SETSCREW SAME AS A082	ea.	1	REF	REF	REF	REF	REF	REF	REF	REF	1	12
P-F	5305-408-0044	A224	SETSCREW SAME AS A086	ea.	2	REF	REF	REF	REP	REF	REF	REF	REF	1	26,27
P-F		A225	WASHER, LOCK SAME AS A008	ea.	2	REF	REF	REF	REF	REF	REP	REF	REF	1	29
P-F	5815-392-9544	A226	LATCH, PIVOT SMB157379	(80063) ea.	1	*	*	*	*	*	*	5	2	1	13
P-F	5815-588-0954	A227	SHIM SMB314759	(80063) ea.	2	2	2	2	*	2	2	19	10	1	31
P-F	5815-588-0953	A228	SHIM SMB314957	(80063) ea.	2	2	2	2	*	2	2	19	10	1	32
P-F	5815-543-4288	A229	SPRING, HELICAL COMPRESSION SMB314848	(80063) ea.	1	*	2	2	*	2	2	12	5	1	15
P-F	5815-606-8710	A230	LATCH SMB314760	(80063) ea.	1	*	*	*	*	*	*	4	1	1	14
P-F	5815-630-7853	A231	HINGE, TAPE COVER SMB331458	(80063) ea.	1	*	*	*	*	*	*	*	4	1	1
P-F	5305-297-7894	A232	SETSCREW MS51020-27	(96906) ea.	2	*	*	*	*	*	2	10	4	1	19
X2-F	5815-521-1391	A233	GUIDE, TAPE SMB157347	(80063) ea.	1									1	20
P-F	5305-534-3020	A234	SCREW, MACHINE SMB157401	(80063) ea.	2	*	*	2	*	*	2	10	4	1	18
P-F	5815-633-3364	A235	SPRING, HELICAL, TORSION SMB157670	(80063) ea.	1	*	*	2	*	*	*	8	3	1	17
P-F	5315-588-0968	A236	PIN, STRAIGHT, HEADLESS SMB314764	(80063) ea.	1	*	*	*	*	*	*	5	2	1	16
X2-F	5815-630-7847	A237	BLOCK, MOUNTING SMB331459	(80063) ea.	1									1	30
P-F	5815-593-2321	A238	COVER, TAPE HINGE 64045A	(82423) ea.	1	*	*	*	*	*	*	4	1	1	21
P-H	5815-615-5319	A238A	COVER, TRANSMITTER DISTRIBUTOR SMB331460	(80063) ea.	1				*	*	*	4	1	1	33
M-H		A239	PLATE, SPACER 67244	(82423) ea.	1									1	35
A-F		A240	MOTOR, ALTERNATING CURRENT SMB331510	(80063) ea.	1									11	
P-F	5305-207-5576	A241	SCREW, CAP, SOC KET HEAD 10026	(82423) ea.	4	2	2	2	*	2	2	16	8	11	1
P-F	5310-198-3711	A242	WASHER, LOCK MS35339-62	(96906) ea.	4	*	*	2	*	*	2	10	4	11	2
P-F	5310-596-7580	A243	WASHER, FLAT 10481	(82423) ea.	4	*	*	2	*	*	2	10	4	11	3
P-F	5940-231-4430	A244	TERMINAL LUG SAME AS A199	ea.	4	REF	REF	REF	REF	REF	REF	REF	REF	11	28
X2-F	5325-276-4265	A245	GROMMET, RUBBER 2538	(70485) ea.	1									11	29

SECTION II REPAIR PARTS FOR DIRECT SUPPORT, GENERAL SUPPORT, AND DEPOT MAINTENANCE (CONTINUED)

(1) SMR CODE	(2) FEDERAL STOCK NUMBER	(3) DESCRIPTION USABLE ON CODE REF. NUMBER & MFR. CODE		(4) U N I T O F M E A S	(5) QTY INC IN UNIT	(6) 30-DAY DS MAINT			(7) 30-DAY GS MAINT			(8)	(9)	(10) ILLUS- TRATION	
						ALLOWANCE			ALLOWANCE			1-YR	DEPOT	(A)	(B)
						(A)	(B)	(C)	(A)	(B)	(C)	ALW PER 100	MAINT ALW PER		
						1-20	21-50	51-100	1-20	21-50	51-100	EQUIP	100	FIG	ITEM
						CNTGY						EQUIP	EQUIP	NO.	NO.
P-F	5315-547-9203	A246	PIN, STRAIGHT, HEADLESS SCB69682 (80063)	ea.	1	*	*	*	*	*	*	5	2	11	7
P-F	5815-697-7889	A247	GEAR, WORM SMB196132 (80063)	ea.	1	*	*	*	*	*	*	4	1	11	6
P-P	5355-579-7023	A248	KNOB SMB149064 (80063)	ea.	1	*	*	*	*	*	*	4	1	11	9
P-F	5305-333-4254	A249	SETSCREW MS51020-51 (96906)	ea.	1	*	*	*	*	*	*	5	2	11	8
P-F-R	6105-609-4160	A250	MOTOR, ALTERNATING CURRENT 56854A (80063)	ea.	1	*	*	*	*	*	*	4	2	11	
P-H	5305-656-0181	A251	SCREW, MACHINE 10172 (82423)	ea.	8				2	2	2	27	15	11	10
P-H	5305-988-7130	A252	SCREW, MACHINE 10196 (82423)	ea.	8				2	2	2	27	15	11	12
P-H	5310-579-1252	A253	WASHER, LOCK WAS129 (81041)	ea.	.8				*	2	2	16	8	11	11
P-H	3110-542-0120	A254	BEARING, BALL ANNULAR 38KVTD (21335)	ea.	2				*	*	2	10	4	11	24,25
P-H	6105-542-6563	A255	ROTOR, MOTOR 56853 (82423)	ea.	1				*	*	*	5	2	11	26
P-H	6105-631-8033	A256	STATOR, MOTOR 56882 (82423)	ea.	1				*	*	*	5	2	11	27
P-H	6105-609-4159	A257	END BELL 56884 (82423)	ea.	1				*	*	*	5	2	11	23
P-N	6105-609-4158	A258	END BELL 56885 (82423)	ea.	1				*	*	*	5	2	11	16
P-H	5815-609-4169	A259	RETAINER, BEARING 56886 (82423)	ea.	2				*	*	2	10	4	11	13,20
P-H	5310-579-3429	A260	WASHER, SPRING TENSION 56887 (82423)	ea.	2				*	*	2	10	4	11	15,22
P-H	5340-616-5070	A261	SHIM 56888 (82423)	ea.	2				*	*	2	10	4	11	14,21
P-F	5305-883-0749	A262	POST, STUD SMB331500 (80063)	ea.	1	*	*	*	*	*	*	4	1	12	57
P-F	5310-842-1776	A263	WASHER, FLAT 68132 (82423)	ea.	4	*	*	2	*	*	2	10	4	12	49,54

**SECTION IV INDEX-FEDERAL STOCK NUMBER AND REFERENCE NUMBER CROSS REFERENCE
TO FIGURE AND ITEM NUMBER OR REFERENCE DESIGNATION (TT-122A/FG)**

NOTE: LATEST FEDERAL STOCK NUMBER ASSIGNMENTS ARE INCLUDED AT END OF INDEX

FEDERAL STOCK NUMBER	FIGURE NUMBER	ITEM NUMBER OR REF DESIGNATION	FEDERAL STOCK NUMBER	FIGURE NUMBER	ITEM NUMBER OR REF DESIGNATION
3110-144-8865	10	18,21	5310-205-8930	6	12
3110-155-9628	6	24,26	5310-209-0574	8	24
3110-542-0120	11	24,25	5310-209-1366	12	13
5305-014-0853	8	29	5310-227-6574	12	3
5305-206-2476	8	22	5310-297-8940	8	4
5305-207-5576	11	1	5310-521-8475	5	3,6,9,15, 18,21
5305-280-2083	12	12	5310-521-8552	10	17
5305-297-7721	2	10	5310-537-8631	3	28,29
5305-297-7894	1	19	5310-543-5933	9	2
5305-297-7905	5	24,29	5310-545-8406	6	20
5305-297-7965	6	1	5310-550-1154	2	1,2
5305-297-9584	9	1	5310-576-1352	10	15
5305-333-4254	11	8	5310-579-1252	11	11
5305-393-1917	9	3	5310-579-3429	11	15,22
5305-408-0044	11	26,27	5310-595-5969	5	41
5305-521-8637	5	33	5310-596-7580	11	3
5305-534-3020	1	18	5310-600-2828	3	5
5305-594-1028	10	1	5310-616-3555	12	24,29,36
5305-616-6382	6	4	5310-638-5179	10	19
5305-656-0181	11	10	5310-721-7810	7	5
5305-660-1939	8	8	5310-842-1776	12	49,54
5305-721-3054	7	4	5315-547-9203	11	7
5305-842-1427	12	3,5	5315-588-0968	1	16
5305-883-0749	12	57	5315-597-9673	3	18
5305-926-5657	3	7	5315-839-2326	10	2,4
5305-983-6649	6	13	5325-174-5317	1	10
5305-983-7427	12	47,52	5325-276-4265	11	29
5305-985-0270	10	20	5325-875-7150	10	6
5305-988-7130	1	12	5330-641-3180	2	13
5306-600-3058	10	14	5330-735-3438	4	22
5310-176-8119	4	3,4	5330-776-2693	6	7,9
5310-198-3711	11	2	5330-841-6380	5	39
			5330-841-7418	3	23,24,26
			5330-844-0679	3	25

**SECTION IV INDEX-FEDERAL STOCK NUMBER AND REFERENCE NUMBER CROSS REFERENCE
TO FIGURE AND ITEM NUMBER OR REFERENCE DESIGNATION (TT-122A/FG)**

FEDERAL STOCK NUMBER	FIGURE NUMBER	ITEM NUMBER OR REF DESIGNATION	FEDERAL STOCK NUMBER	FIGURE NUMBER	ITEM NUMBER OR REF DESIGNATION
5340-205-6552	4	8,9,10,11,12	5815-392-7860	5	25
			5815-392-7861	5	36
5340-282-2426	3	1,3,14,16,17,21	5815-392-7862	5	30
5340-399-7867	12	11	5815-392-7864	5	28
5340-514-1811	2	3,4	5815-392-7866	6	25
5340-597-2288	4	6	5815-392-7867	4	15
5340-597-9492	5	26	5815-392-7868	2	12
5340-616-5070	11	14,21	5815-392-7869	3	15
5340-801-8903	12	43	5815-392-7870	6	15
5355-579-7023	11	9	5815-392-7871	8	20
5815-019-0094	1		5815-392-9544	1	13
5815-030-0432	4	19	5815-393-1919	6	19
5815-092-1440	5	12	5815-521-1391	1	20
5815-099-0653	6	17	5815-534-3010	10	3
5815-200-7858	8	26	5815-534-3011	10	5
5815-219-7019	8	30	5815-537-7682	5	22
5815-322-5581	6	5	5815-540-7270	6	8
5815-322-5609	5	35	5815-543-4288	1	15
5815-330-9941	5	5			
5815-340-3720	6	6	5815-570-3493	6	16,18
5815-356-3307	4	5			
5815-356-3494	7	6	5815-588-0944	3	22
5815-356-3515	7	9	5815-588-0953	1	32
5815-356-3517	7	15	5815-588-0954	1	31
5815-356-3518	5	5	5815-597-2273	4	1
5815-356-3519	5	4	5815-597-2285	3	20
5815-384-0887	7	13	5815-597-2290	4	2
5815-392-7847	7	3	5815-597-7563	2	6
5815-392-7849	3	34	5815-598-4965	3	1
5815-392-7830	3	19	5815-600-3005	6	2
5815-392-7853	4	14			
5815-392-7854	2	7	5815-608-8707	10	23
5815-392-7857	5	23	5815-608-8708	6	11
5815-392-7858	4	13			
5815-392-7859	7	18	5815-608-8710	1	14

**SECTION IV INDEX-FEDERAL STOCK NUMBER AND REFERENCE NUMBER CROSS REFERENCE
TO FIGURE AND ITEM NUMBER OR REFERENCE DESIGNATION (TT-122A/FG)**

FEDERAL STOCK NUMBER	FIGURE NUMBER	ITEM NUMBER OR REF DESIGNATION	FEDERAL STOCK NUMBER	FIGURE NUMBER	ITEM NUMBER OR REF DESIGNATION
5815-609-4169	11	13,20			
5815-609-9665	10	21	5940-501-7669	12	
5815-615-5319	1	33	5940-504-5787	3	
5815-617-4429	1	11	5940-581-3178	12	50
5815-617-6340	1	6	5940-680-9738	12	
5815-630-7847	1	30	5940-946-2435	8	10
5815-630-7853	1	4	5945-259-6126	8	28
5815-649-9289	4	16	5945-681-0330	12	27
5815-650-4392	8	21	5950-609-4145	8	25
5815-663-3296	6	3	5975-273-0788	12	44,45
5815-663-3364	1	17			
5815-677-4455	2	5			
5815-692-6842	1	9	5995-650-2521	12	14
5815-697-7889	11	6			
5815-697-7890	10	16			
5815-790-3260	8	17	6105-542-6563	11	26
			6105-609-4158	11	16
			6105-609-4159	11	23
5815-953-2321	1	21	6105-609-4160	11	
5910-342-3532	12	21			
5915-501-0546	8	14	6105-631-8033	11	27
5920-244-5150	12	37	6145-660-9321	12	
5920-794-3215	12	38	9320-125-8814	10	7
5930-548-4893	3	11			
5930-786-4040	12	31			
5935-201-7941	12	13			
5940-204-8966	12				
5940-231-4430	12				

**SECTION IV INDEX-FEDERAL STOCK NUMBER AND REFERENCE NUMBER CROSS REFERENCE
TO FIGURE AND ITEM NUMBER OR REFERENCE DESIGNATION (CONTINUED)**

<u>REFERENCE NO.</u>	<u>MFG. CODE</u>	<u>FIG. NO.</u>	<u>REFERENCE DESIGNATION</u>	<u>REFERENCE NO.</u>	<u>MFG. CODE</u>	<u>FIG. NO.</u>	<u>REFERENCE DESIGNATION</u>
C3044F135	78553	3	13				
MS35339-60	96906	12	7,10,26,39				
SMB331485	80063	12	15				
SMB331501	80063	12	4				
SMB331517	80063	12	22				
SMB331527	80063	6	8				
SMC331463	80063	12	17				
SMC331507	80063	10					
SMC331509	80063	12	46				
SMC331516	80063	12	16				
UP121M 81349			12				
41403/4WAEX	71785	12	55				
10439	82423	12	40				
10484	82423	12	41				
12301	82423	8	12				
12354	82423	12	23				
12385	82423	3	6				
20636-83.00	82423	17					
63293A	82423	1					
340121	75915	12	42				

LATEST FEDERAL STOCK NUMBER ASSIGNMENTS

<u>FEDERAL STOCK NUMBER</u>	<u>FIGURE NUMBER</u>	<u>ITEM NO. OR REF. DESIGNATION</u>
5305-616-2209	12	6, 9, 18, 25
5315-084-0232	3	2
5815-393-1918	2	5
59140-201-8990	12	
5940-804-0365	7	20, 21
6145-660-9321	12	

SECTION II REPAIR PARTS FOR DIRECT SUPPORT, GENERAL SUPPORT, AND DEPOT MAINTENANCE (TT-122A/FG)

(1) SMR CODE	(2) FEDERAL STOCK NUMBER	(3) DESCRIPTION USABLE ON CODE REF. NUMBER & MFR. CODE		(4) U N I T O F M E A S U R E M E N T	(5) QTY INC IN UNIT	(6) 30-DAY DS MAINT			(7) 30-DAY GS MAINT			(8) 1-YR	(9) DEPOT	(10) ILLUS- TRATION		
						ALLOWANCE			ALLOWANCE			ALW	MAINT	(A)	(B)	
						(A)	(B)	(C)	(A)	(B)	(C)	PER	ALW			
						1-20	21-50	51-100	1-20	21-50	51-100	100	PER	FIG	ITEM	
	58153557-6256	A001	DISTRIBUTOR-TRANSMITTER, TELETYPEWRITER TT-123A/FG (80058) (This item is nonexpendable)													
XI-D		A002	DISTRIBUTOR, TRANSMITTER, TELETYPE WRITER 90424A-9.00 (82423)	SET	1											
P-F	2305-616-2209	A003	SCREW, CAP, SOC KET HEAD 10003 (82423)	ea.	12	2	3	6	2	2	2	71	50	10	25	
P-F	5305-983-7427	A004	SCREW, CAP, SOC KET HEAD MS16998-12 (96906)	ea.	12	2	3	2	22		2	16	8	14	58,64	
P-F	5305-280-2083	A005	SCREW, CAP, SOC KET HEAD 10055 (82423)	ea.	6	2	2	3	2	2	2	40	25	14	1,12,14,21	
P-F	5305-985-0270	A006	SETSCREW MS1S020-48 (96906)	ea.	2	2	2	2	*	2	2	19	10	10	20	
P-F	5305-208-1862	A007	SCREW, MACHINE 10321 (82423)	ea.	2	*	*	2	*	*	2	10	4	13	16	
P-F	5310-616-3555	A008	WASHER, LOCK MS35333-71 (96906)	ea.	6	2	2	2	2	2	2	27	15	14	29,47	
P-F		A009	WASHER, LOCK 170601 (78189)	ea.	2	*	*	*	*	*	*	5	2	13	17	
P-F		A010	WASHER, LOCK MS35337-60 (96906)	ea.	5	*	2	2	*	2	2	15	7	10	26	
P-F		A011	WASHER, LOCK MS35339-60 (96906)	ea.	15	2	3	5	2	2	2	71	50	14	2,7,10,22, 26,42	
P-F	5310-721-7810	A012	WASHER, LOCK MS35339-61 (96906)	ea.	1	1	*	2	*	*	2	12	5	14	36	
P-F	5310-576-1352	A013	WASHER, LOCK MS33340-62 (96906)	ea.	2	*	*	*	*	*	*	5	2	10	15	
P-F	5310-298-8157	A014	WASHER, LOCK 6001 (44655)	ea.	2	*	*	*	*	*	*	5	2	14	39	
P-F	5310-800-3225	A015	WASHER, FLAT 10472 (82423)	ea.	1	*	*	*	*	*	*	4	1	10	27	
P-F	5310-208-4124	A016	NUT, PLAIN, HEXAGON 10516 (82423)	ea.	1	*	*	*	*	*	*	5	2	14	35	
P-F	3110-144-8865	A017	BEARING, BALL, ANNULAR 39KDDPS160 (21335)	ea.	2	2	2	2	*	2	2	16	8	10	22	
P-F	5313-839-2326	A018	PIN, COTTER MS24665-281 (96906)	ea.	2	*	*	2	*	*	2	10	4	10	2,4	
P-F	5303-826-7780	A019	SCREW, MACHINE 1700 (82423)	ea.	1	*	*	*	*	*	*	5	2	14	40	
P-F	5305-842-1427	A020	SCREW, MACHINE 0 12393 (82423)	ea.	6	2	2	2	2	2	2	27	15	14	28,46	
P-F	5310-209-1366	A021	WASHER, LOCK MS35335-58 (96906)	ea.	6	8	2	2	3	2	2	40	25	14	5,13,15	
P-F	5930-786-4040	A022	SWITCH, TOGGLE 8823K6 (15605)	ea.	1	*	*	2	*	*	*	8	3	14	31	
P-F	5910-112-7401	A023	CAP, FIXED, PAPER, DIELECTRIC CP538IDF504V (81349)	ea.	1	*	*	2	*	*	*	8	3	14	27	
P-F		A024	TERMINAL BOARD 41403/4WAEX (71785)	ea.	1	*	*	*	*	*	*	5	2	14	67	
M-D		A025	PLATE, DESIGNATION MS4140 (71783)	ea.	1									14	68	

SECTION II REPAIR PARTS FOR DIRECT SUPPORT, GENERAL SUPPORT, AND DEPOT MAINTENANCE (TT-122A/FG)

(1) SMR CODE	(2) FEDERAL STOCK NUMBER	(3) DESCRIPTION USABLE ON CODE REF. NUMBER & MFR. CODE		(4) U N I T O F M E A S U R E M E N T	(5) QTY INC IN UNIT	(6) 30-DAY DS MAINT			(7) 30-DAY GS MAINT			(8) 1-YR	(9) DEPOT	(10) ILLUS- TRATION	
						ALLOWANCE			ALLOWANCE			ALW PER 100	MAINT ALW PER 100	(A)	(B)
						(A)	(B)	(C)	(A)	(B)	(C)	EQUIP	EQUIP	FIG	ITEM
						1-20	21-50	51-100	1-20	21-50	51-100	CNTGY	EQUIP	NO.	NO.
P-O	5920-131-9819	A026	USE, CARTRIDGE F02D1R60B (81349)	ea.	2	10	25	47	6	9	12	567	500	14	49
P-O	5920-131-9819	A027	FUSE, CARTRIDGE SAME AS A026	ea.	REF	REF	REF	REF	REF	REF	REF	REF	REF	14	49
P-F		A028	FUSEHOLDER 340121 (75915)	ea.	1	*	*	2	*	*	2	10	4	14	53
X1-F		A029	WASHER, LOCK 10439 (82423)	ea.	1									14	51
X1-F		A030	WASHER, NON METALLIC 10484 (82423)	ea.	1.									14	52
P-O	5920-244-5150	A031	CAP, FUSEHOLDER 342003SA2 (75915)	ea.	1	*	*	*	*	*	*	5	2	14	48
X1-F		A032	FUSEHOLDER 342003SA1 (75915)	ea.	1									14	53
P-F		A033	FUSEHOLDER SAME AS A028	ea.	REF	REF	REF	REF	REF	REF	REF	REF	REF	14	53
X1-F		A034	WASHER, LOCK SAME AS A029	ea.	1									14	51
X1-F		A035	WASHER, NON METALLIC SAME AS A030	ea.	1									14	52
P-O	5920-244-5150	A036	CAP, FUSEHOLDER SAME AS A031 (75915)	ea.	1	REF	REF	REF	REF	REF	REF	REF	REF	14	48
X-F		A037	FUSEHOLDER SAME AS A032	ea.	1									14	53
X2-F	5340-081-2987	A038	CLAMP, LOOP C3046A635 (78553)	ea.	2									14	11
X2-F	5340-399-7867	A039	CLAMP, LOOP C3049A3108 (78553)	ea.	3									14	8
P-F	5975-273-0788	A040	BUSHING, STRAIN RELIEF SR6P (28520)	ea.	2	*	*	2	*	*	2	10	4	14	55,56
P-F	5940-581-3178	A041	TERMINAL BOARD 61403/4WAX (81785)	ea.	1	*	*	*	*	*	*	5	2	14	62
M-D		A042	PLATE, DESIGNATION 21041 (82423)	ea.	1									14	63
P-F	5310-638-5179	A043	WASHER, FLAT SCB69322-6 (80063)	ea.	1	2	2	2	*	2	2	19	10	10	19
P-F	5815-697-7890	A044	GEAR, WORMWHEEL SMB196685 (80063)	ea.	1	*	*	2	*	*	*	8	3	10	16
P-F	5815-534-3010	A045	GEAR, WORM SMB196134 (80063)	ea.	1	*	*	2	*	*	*	8	3	10	3
P-F	5815-534-3011	A046	GEAR, WORMWHEEL SMB196135 (80063)	ea.	1	*	*	2	*	*	*	8	3	10	5
P-F	5310-521-8552	A047	KEY, MACHINE SMB186915 (80063)	ea.	5	2	2	2	*	2	2	19	10	10	17
P-F	5015-523-1968	A048	FILTER SMB314938 (80063)	ea.	1	*	*	2	*	*	*	8	3	14	23
P-F	5306-600-3058	A049	SCREW, CAP, HEXAGON HEAD SMB196656 (80063)	ea.	2	*	*	2	*	*	2	10	4	10	14
A-F		A030	CABLE ASSEMBLY, AC 1M8314911 (80063)	ea.	1									14	16
P-F	5935-201-7941	A015	PLUG, TELEPHONE PJ055GY (81349)	ea.	1	*	*	*	*	*	*	5	2	14	

SECTION II REPAIR PARTS FOR DIRECT SUPPORT, GENERAL SUPPORT, AND DEPOT MAINTENANCE (TT-122A/FG)

(1) SMR CODE	(2) FEDERAL STOCK NUMBER	(3) DESCRIPTION USABLE ON CODE REF. NUMBER & MFR. CODE		(4) U N I T O F M E A S	(5) QTY INC IN UNIT	(6) 30-DAY DS MAINT			(7) 30-DAY GS MAINT			(8)	(9)	(10) ILLUS- TRATION	
						ALLOWANCE			ALLOWANCE			1-YR	DEPOT	(A)	(B)
						(A)	(B)	(C)	(A)	(B)	(C)	ALW PER 100	MAINT ALW PER		
						1-20	21-50	51-100	1-20	21-50	51-100	EQUIP PER 100	100 EQUIP	FIG NO.	ITEM NO.
P-F		A052	CABLE, POWER, ELECTRICAL 20636-83.00 (82423)	ea.	1	*	2	2	*	2	2	13	7	14	
P-F	5940-680-9738	A053	TERMINAL LUGS YAE14Z2 (09922)	ea.	2	2	2	2	2	2	2	27	15	14	
X2-F		A054	CLAMP, LOOP SMB331452 (80063)	ea.	1									10	13
X2-D	5815-617-5515	A055	COVER, TELETYPE WRITER SMC331473 (80063)	ea.	1									10	8
P-F	5305-594-1028	A036	SCREW, SHOULDERED SMB157319 (80063)	ea.	3	*	2	2	*	2	2	13	6	10	1
X1-D		A057	COVER SMC331474 (80063)	ea.	1									10	
X2-D	9320-125-8814	A058	CHANNEL, RUBBER SMB331481 (80063)	ea.	1									10	7
P-H	5325-875-7150	A059	GROMMET, RUBBER SMB3331482 (80063)	ea.	3	*			*	2	2	13	6	10	6
M-D		A060	PLATE, DESIGNATION SMC331483 (80063)	ea.	1									14	57
P-F	5815-608-8707	A061	SHAFT SMB331484 (80063)	ea.	1	*	*	*	*	*	*	5	2	10	23
A-F		A062	CABLE ASSEMBLY SMB331485 (80063)	ea.	1									14	17
P-F	5310-616-3535	A063	WASHER, LOCK SAME AS A008 (80063)	ea.	1	REF	REF	REF	REF	REF	REF	REF	REF	14	
P-F	5935-636-7143	A064	CONNECTOR, PLUG, ELECTRICAL UP121H (81349)	ea.	1	*	*	*	*	*	*	*5	2	14	
P-F	6145-660-9321	A065	CABLE, POWER, ELECTRICAL CO-O2MFG(2/18)SJ0375 (81349)	ea.	1	*	2	2	*	2	2	15	7	14	
P F	5940-501 7669	A066	TERMINAL LUG C33 (59730)	ea.	1	*	*	*	*	*	*	5	2	14	
P-P	5940-501-7669	A067	TERMINAL LUG 33657 (00779)	ea.	1	*	*	*	*	*	*	4	1	14	
P-F	5940-680-9738	A068	TERMINAL LUG SAME AS A053 (80063)	ea.	2	REF	REF	REF		REF	REF	REF	REF	14	
P-F	5940-609-9665	A069	GEAR, SPUR SMB331487 (80063)	ea.	1	*	*	2	*	*	*	8	3	10	21
M-D		A070	PLATE, DESIGNATION SMB331489 (80063)	ea.	1									14	34
X-D		A071	BASE, UNIT (80063)	ea.	1									10	24
M-D		A072	WIRING HARNESS BRANCHED SMC331493 (80063)	ea.	1									14	18
M-D		A073	WIRING HARNESS BRANCHED SMC331496 (80063)	ea.	1									14	20
X2-H		A074	BRACKET SMB331497 (80063)	ea.	2									14	43,44
X2-H	5340-881-1205	A075	BUTTON, PLUG SMB331498 (80063)	ea.	1									14	54

SECTION II REPAIR PARTS FOR DIRECT SUPPORT, GENERAL SUPPORT, AND DEPOT MAINTENANCE (TT-122A/FG)

(1) SMR CODE	(2) FEDERAL STOCK NUMBER	(3) DESCRIPTION USABLE ON CODE REF. NUMBER & MFR. CODE		(4) U N I T O F M E A S	(5) QTY INC IN UNIT	(6) 30-DAY DS MAINT			(7) 30-DAY GS MAINT			(8) 1-YR	(9) DEPOT	(10) ILLUS- TRATION	
						ALLOWANCE			ALLOWANCE			ALW	MAINT	(A)	(B)
						(A)	(B)	(C)	(A)	(B)	(C)	PER	ALW		
						1-20	21-50	51-100	1-20	21-50	51-100	100	PER	FIG	ITEM
											EQUIP	100	NO.	NO.	
											CNTGY	EQUIP			
P-F	5905-683-6375	A076	RESISTOR, FIXED WIRE WOUND SMB331499 (80063)	ea.	1	*	*	2		*	*	*	3	14	38
P-F	5305-883-0749	A077	STUD, LOCK 58331500 (80063)	ea.	1	*	*	*	*	*	*	5	2	14	59
M-D	A078		COVER, SHIELD SMB331501 (80063)	ea.	1									14	4
P-F	5305-280-2083	A079	SCREW, CAR, SOC RET HEAD SAME AS A005 (80063)	ea.	4	REF	REF	REF	REF	REF	REF	REF	REF	14	1
P-F		A080	WASHER, LOCK SAME AS A011	ea.	4	REF	REF	REF	REF	REF	REF	REF	REF	14	2
P-F	5310-227-6574	A081	WASHER, FLAT 10450 (82423)	ea.	4	*	2	2	*	2	2	15	7	14	3
P-F	5310-209-1366	A082	WASHER, LOCK SAME AS A021 (82423)	ea.	4	REF	REF	REF	REF	REF	REF	REF	REF	14	5
X1-F		A083	DISTRIBUTOR, TRANSMITTER 63293A (82423)	ea.	1									1	
P-F	5305-297-9172	A084	SCREW, CAP, SOC KET READ 10030 (82423)	ea.	2	*	*	2	*	*	2	10	4	9	1
P-F	5310-543-5933	A085	WASHER, LOCK MS35333-73 (96906)	ea.	2	2	2	2	*	2	2	19	10	9	2
P-F	5305-521-8637	A086	SCREW, CAP, SOC KET HEAD 10001 (82423)	ea.	2	*	*	2	*	*	2	10	4	5	33
P-F	5305-616-2203	A87	SCREW, CAP, SOC KET HEAD SAME AS A003 (82423)	ea.	13	REF	REF	REF	REF	REF	REF	REF	REF	2	8
														3	9
														5	31
														6	21
														7	1
														8	6
P-F	5305-983-6649	A088	SCREW, CAP, SOC KET HEAD MS16998-10 (96906)	ea.	2	2	2	2	*	2	2	16	8	6	13
P-F	5305-280-2083	A089	SCREW, CAP, SOC KET HEAD SAME AS A005 (96906)	ea.	1	REF	REF	REF	REF	REF	REF	REF	REF	8	15
P-F	5305-014-0853	A090	SETSCREW MS51019-34 (96906)	ea.	1	*	2	2	*	2	2	13	6	8	29
P-F	5305-616-6382	A091	SETSCREW 10208 (82423)	ea.	2	*	*	*	2	*	*	2	4	6	4
P-F	5305-985-0270	A092	SETSCREW SAME AS A006 (82423)	ea.	2	REF	REF	REF	REF	REF	REF	REF	REF	6	10
P-F	5305-297-7905	A093	SETSCREW MS51020-48 (96906)	ea.	2	*	*	2	*	*	2	10	4	6	24,29
P-F	5305-408-0044	A094	SETSCREW MS51028-55 (96906)	ea.	2	2	2	2	*	2	2	16	8	1	26,27
P-F	5305-297-7721	A095	SCREW, MACHINE. 10398 (82423)	ea.	*	*	*	*	*	*	*	5	2	2	10
P-F		A096	WASHER, LOCK SAME AS A011 (82423)	ea.	7	REF	REF	REF	REF	REF	REF	REF	REF	2	9
														3	8,10
														5	32,34
														6	14,22
														8	5,19
P-F	5310-227-6574	A097	WASHER, FLAT SAME AS A081	ea.	3	REF	REF	REF	REF	REF	REF	REF	REF	3	27
P-F	5310-595-5969	A098	WASHER, FLAT 10459 (82423)	ea.	2	*	*	2	*	*	2	10	4	6	23
														5	41

SECTION V REPAIR PARTS FOR DIRECT SUPPORT, GENERAL SUPPORT, AND DEPOT MAINTENANCE (CONT)

(1) SMR CODE	(2) FEDERAL STOCK NUMBER	(3) DESCRIPTION		(4) QTY OF MEAS	(5) QTY INC IN UNIT	(6) 30-DAY DS MAINT ALLOWANCE			(7) 30-DAY GS MAINT ALLOWANCE			(8) 1 YR ALW PER EQUIP CNTGCV	(9) DEPOT MAINT ALW PER 100 EQUIP	(10) ILLUSTRATIONS			
						REFERENCE NUMBER & MFR. CODE	USABLE ON CODE	(a)	(b)	(c)	(a)			(b)	(c)	(a) FIG NO.	(b) ITEM NO. OR REF. DESIGN.
								1-20	21-50	51-100	1-20			21-50	51-100		
P-F	5310-600-2828	A099	NUT, SELF-LOCK INC. HEXAGON F22NTM60 (72962)	ea	1	*	*	*	*	*	*	5	2	3	5		
P-F	5310-550-1154	A100	NUT, PLAIN HEXAGON 10504 (82423)	ea	2	*	*	2	*		2	10	4	2	1,2		
P-F	5310-176-8119	A101	NUT PLAIN, HEXAGON 10509 (82423)	ea	3	*	2	2	*	2	2	13	6	4	3,4 5 37		
P-F	5310-297-8940	A102	NUT, PLAIN, HEXAGON 10512 (82423)	ea.	1	*	*	*	*	*	*	5	2	8	4		
P-F	3110-155-9628	A103	BEARING, BALL, ANNULAR S1KDD7FS160 (213353)	ea	2	2	2	2	*	2	2	16	8	6	24,26		
P-F	5340-282-2426	A104	RING, RETAINING MS16633-3018 (96906)	ea	10	2	3	5	2	2	2	59	40	3	1,3,14,16, 17,21 5 2,27 8 27		
P-F	5340-205-6552	A105	RING RETAINING MS16633-3025 (96906)	ea	5	2	2	3	2	2	2	33	20	4	8,9,10,11, 12		
P-F	5340-514-1841	A106	RING, RETAINING MS16633-3012 (96906)	ea	2	2	2	2	*	2	2	16	8	2	3,4		
P-F		A107	SCREW, MACHINE 123301 (82423)	ea	-4	2	2	2	*	2	2	19	10	8	12		
P-F		A108	SCREW, MACHINE 12308 (82423)	ea	1	*	*	*	*	*	*	5	2	7	7		
P-F	5305-926-5657	A109	SCREW, MACHINE, 12359 (82423)	ea.	1	*	*	*	*	*	*	5	2	3	7		
P-F		A110	SCREW, MACHINE 12385 (82423)	ea	1	*	*	*	*	*	*	5	2	3	6		
P-F	5310-209-1366	A111	WASHER, LOCK SAME AS A021	ea.	11	REF	REF	REF	REF	REF	REF	REF	REF	7	2,8		
P-F	5930-548-4893	A112	SWITCH, SENSI TIVE SHBS187666 (80063)	ea	1	*	*	2	*	*	*	8	3	3	8 13,16 11		
M-D		A113	PLATE, DESIG NATION MSX11172 (71785)	ea	1									8	11		
X2-F		A114	CLAMP, LOOP C3044F135 (78553)	ea	1									3	13		
X2-F	5340-399-7867	A115	CLAMP, LOOP SAME AS A039	ea	1									8	17		
P-F	5940-804-0365	A116	TERMINAL LUG 321021 (00779)	ea	3	*	2	2	*	2	2	13	6	7	20,21		
P-F	5310-521-8475	A117	WASHER, THRUST SCB69389-4 (80063)	ea	6	*	2	2	*	2	2	13	6	5	3,6,9,15 18,21		
P-F	5815-356-3307	A118	POST, ANCHOR SM1B148337 (80063)	ea	2	*	*	2	*	*	2	10	4	4	5		
P-F	5815-598-4965	A119	SPRING, HELICAL EXTENSION SM 186883 (80063)	ea	7	2	2	3	2	2	2	33	20	5	38 1		
P-F	5815-356-3494	A120	SPRING HELICAL EXTENSION SCB69337-14 (80063)	ea	1	*	*	2	*	*	*	8	3	7	6		
P-F	5310-205-8930	A121	WASHER, FLAT SCS69389-8 (80063)	ea	1	*	*	*	*	*	*	4	1	7	12		
P-F	5815-356-3315	A122	CONTACT ASSEM BLY, ELECTRICAL SMHB1148371 (80063)	ea	1	*	*	2	*	*	*	8	3	7	9		

SECTION V REPAIR PARTS FOR DIRECT SUPPORT, GENERAL SUPPORT, AND DEPOT MAINTENANCE (CONT)

(1) SMR CODE	(2) FEDERAL STOCK NUMBER	(3) DESCRIPTION		(4) QTY OF MEAS	(5) QTY INC IN UNIT	(6) 30-DAY DS MAINT ALLOWANCE			(7) 30-DAY GS MAINT ALLOWANCE			(8) 1 YR ALW PER EQUIP CNTGCTY	(9) DEPOT MAINT ALW PER 100 EQUIP	(10) ILLUSTRATIONS			
						REFERENCE NUMBER & MFR. CODE	USABLE ON CODE	(a)	(b)	(c)	(a)			(b)	(c)	(a) FIG NO.	(b) ITEM NO. OR REF. DESIGN.
								1-20	21-50	51-100	1-20			21-50	51-100		
P-F	5340-282-2426	A123	RING, RETAINING SAME AS A104	ea.	1	REF	REF	REF	REF	REF	REF	REF	REF	7	16		
P-F	5940-204-7911	A124	TERMINAL LUG 3027 (77147)	ea	1	*	*	*	*	*	*	5	2	7	19		
P-F	5815-356-3519	A125	LEVER UNIT, IDENTICAL SCB70112 (80063)	ea	1	*	*	*	*	*	*	8	3	5	4		
P-F	5815-608-8706	A126	CONTACT ASSEM BLY, ELECTRICAL SCB69876 (80063)	ea	1	*	*	2	*	*	*	8	3	7			
P-F	5305-297-7966	A127	SCREW, CAP, SOC KET HEAD 10009 (82423)	ea.	2	*	*	2	*	2	2	10	4	7	4		
P-F	5310-721-7810	A128	WASHER, LOCK SAME AS A012	ea	2	REF	REF	REF	REF	REF	REF	REF	REF	7	5		
P-F	5310-616-3555	A129	WASHER, LOCK SAME AS008	ea.	2	REF	REF	REF	REF	REF	REF	REF	REF	7	11		
P-F		A130	SCREW, MACHINE SAME AS A107	ea	2	REF	REF	REF	REF	REF	REF	REF	REF	7	10		
X1-F		A131	CONTACT, ELEC TRICAL SCB69990 (80063)	ea	2									7	13		
X1-P		A132	LEAD, ELEC TRICAL SCB70061 (80063)	ea	2									7	14		
X1-F		A133	HOLDER, ELEC TRICAL SCB186884 (80063)	ea	2									7	15		
X1-F		A134	TERMINAL LUG SCB69846 (80063)	ea	2									7	12		
P-F	5815-330-9941	A135	BEARING SET SC869494 (80063)	ea	1	*	*	2	*	*	*	8	3	5	5		
P-F	5940-581-0689	A136	TERMINAL BOARD SM8157032 (80063)	ea	1	*	*	*	*	*	*	5	2	8	10		
P-F	5305-660-1939	A137	SCREW, MACHINE 10358 (82423)	ea	4	2	2	2	*	2	2	16	8	8	8		
P-F	5310-545-8406	A138	WASHER, SHIM SMB157208 (80063)	ea	1	*	*	*	*	*	*	5	2	6	20		
P-F	5815-677-4455	A139	SHAFT SMB157399 (80063)	ea	1	*	*	*	*	*	*	5	2	2	5		
X2-F	5815-392-7847	A140	COVER, SWITCH SMB157346 (80063)	ea	1									7	3		
P-F	5815-392-7849	A141	LEVER SMB157349 (80063)	ea	1	*	*	*	*	*	*	5	2	3	34		
P-F	5815-392-7850	A142	LEVER SMB157350 (80063)	ea	1	*	*	*	*	*	*	5	2	3	19		
P-F	5815-392-7854	A143	LEVER SMB157359 (80063)	ea	1	*	*	*	*	*	*	5	2	2	7		
P-F	5945-259-6126	A144	RELAY, ARMATURE SMB157362 (80063)	ea	1	*	*	2	*	*	*	8	3	8	28		
P-F	5815-392-7853	A145	LEVER SM 157363 (80063)	ea	1	*	*	*	*	*	*	5	2	4	14		
P-F	5815-092-1440	A146	SPACER, SLEEVE SMB157014-13 (80063)	ea	1	*	*	*	*	*	*	5	2	5	12		
P-F	5815-392-7857	A147	BEARING, SLEEVE SMB157367 (80063)	ea	1	*	*	*	*	*	*	5	2	5	23		
P-F	5815-392-7858	A148	PIN, HEADLESS SMB157368 (80063)	ea	1	*	*	*	*	*	*	5	2	4	13		

SECTION V REPAIR PARTS FOR DIRECT SUPPORT, GENERAL SUPPORT, AND DEPOT MAINTENANCE (CONT)

(1) SMR CODE	(2) FEDERAL STOCK NUMBER	(3) DESCRIPTION		(4) QTY OF MEAS	(5) QTY INC IN UNIT	(6) 30-DAY DS MAINT ALLOWANCE			(7) 30-DAY GS MAINT ALLOWANCE			(8) 1 YR ALW PER EQUIP CNTGCTY	(9) DEPOT MAINT ALW PER 100 EQUIP	(10) ILLUSTRATIONS			
						REFERENCE NUMBER & MFR. CODE	USABLE ON CODE	(a)	(b)	(c)	(a)			(b)	(c)	(a) FIG NO.	(b) ITEM NO. OR REF. DESIGN.
								1-20	21-50	51-100	1-20			21-50	51-100		
P-F	5815-030-0432	A149	CLAW, TAPE FEED SMB157369 (80063)	ea	1	*	*	2	*	*	*	8	3	4	19		
P-F	5815-209-7019	AL50	STUD, ECCENTRIC SMB157370 (80063)	ea	1	*	*	*	*	*	*	5	2	8	30		
P-F	5815-392-7859	A151	PIN, STRAIGHT, HEADLESS SMB157371 (80063)	ea	1	*	*	*	*	*	*	5	2	7	18		
P-F	5815-392-7860	A152	PIN, STRAIGHT, HEADLESS SMB157372 (80063)	ea	1	*	*	*	*	*	*	5	2	5	25		
P-F	5815-392-7861	A153	BRACKET, GUIDE SMB157373 (80063)	ea	1	*	*	*	*	*	*	5	2	5	36		
P-F	5815-392-7862	A154	PIN, STRAIGHT, HEADLESS SMB157374 (80063)	ea	1	*	*	*	*	*	*	5	2	5	30		
P-F	5815-649-9289	A155	LEVER UNIT, IDENTICAL SMB157375 (80063)	ea	1	*	*	*	*	*	*	8	3	4	16		
P-F	5815-392-7864	A156	LEVER SMB157377 (80063)	ea	1	*	*	*	*	*	*	5	2	5	28		
P-F	5305-393-1917	A157	STUD, EXTENSION SMB157382 (80063)	ea	2	*	*	2	*	*	2	10	4	9	3		
P-F	5815-392-7866	A158	COLLAR SMB157383 (80063)	ea	1	*	*	*	*	*	*	5	2	6	25		
P-F	5815-392-7867	A159	LEVER SMB157386 (80063)	ea	1	*	*	*	*	*	*	5	2	4	15		
P-F	5815-392-7868	A160	GUIDE, LEVER SMB157389 (80063)	ea	1	*	*	*	*	*	*	5	2	2	12		
P-F	5815-392-7869	A161	LEVER SMC157390 (80063)	ea	1	*	*	*	*	*	*	5	2	3	15		
X2-F	5815-650-4392	A162	BRACKET SMB157393 (80063)	ea	1									8	21		
P-F	5815-392-7870	A163	CAM SMB157394 (80063)	ea	1	*	*	2	*	*	*	8	3	6	15		
P-F	5815-099-0653	A164	CAM SMB157395 (80063)	ea	1	*	*	2	*	*	*	8	3	6	17		
X2-F	5815-392-7871	A165	BRACKET SMB157396 (80063)	ea	1									8	20		
P-F	5815-393-1919	A166	CAMSHAFT ASSEM BLY SMC157656 (80063)	ea	1	*	*	2	*	*	*	8	3	6	19		
P-F	5315-597-9673	A167	PIN, GROOVED HEADLESS SMB157398 (80063)	ea	1	*	*	*	*	*	*	5	2	3	18		
P-F	5815-597-2285	A168	SPRING, HELICAL EXTENSION SMB157010-11 (80063)	ea	1	*	*	2	*	*	*	8	3	3	20		
P-F	5340-597-9492	A169	SPRING, HELICAL EXTENSION SMB157010-12 (80063)	ea	1	*	*	2	*	*	*	8	3	5	26		
P-F	5815-597-2273	A170	SPRING, HELICAL EXTENSION SMB157010-13 (80063)	ea	5	2	2	2	2	2	2	27	15	4	1		
P-F	5340-597-2288	A171	SPRING, HELICAL EXTENSION SMB157010-14 (80063)	ea	1	*	*	2	*	*	*	8	3	4	6		
P-F	5815-597-2290	A172	SPRING, HELICAL EXTENSION SMB157010-15 (80063)	ea	1	*	*	2	*	*	*	8	3	4	2		

SECTION V REPAIR PARTS FOR DIRECT SUPPORT, GENERAL SUPPORT, AND DEPOT MAINTENANCE (CONT)

(1) SMR CODE	(2) FEDERAL STOCK NUMBER	(3) DESCRIPTION	(4) QTY OF MEAS	(5) QTY INC IN UNIT	(6) 30-DAY DS MAINT ALLOWANCE			(7) 30-DAY GS MAINT ALLOWANCE			(8) 1 YR ALW PER EQUIP CNTGCV	(9) DEPOT MAINT ALW PER 100 EQUIP	(10) ILLUSTRATIONS	
					(a)	(b)	(c)	(a)	(b)	(c)			(a)	(b)
					1-20	21-50	51-100	1-20	21-50	51-100			FIG NO.	ITEM NO. OR REF. DESIGN.
P-F	5815-200-7856	A173 SPRING, HELICAL EXTENSION SMB157010-16 (80063)	ea	1	*	*	2	*	*	*	8	3	8	26
P-F	5815-597-7563	A174 SPRING, HELICAL TORSION SMB157407 (80063)	ea	1	*	*	2	*	*	*	8	3	2	6
M-H		A175 CABLE ASSEMBLY, ELECTRICAL SMB157470 (80063)	ea	1									3	12
P-F	5940-504-5787	A176 TERMINAL LUG 321035 (00779)	ea	2	2	2	3	2	2	2	33	20	3	
M-H		A177 LEAD, ELECTRI CAL SMB314931 (80063)	ea	1									8	2
P-F	5940-504-5787	A178 TERMINAL LUG SAME AS A176	ea	1	REF	REF	REF	REF	REF	REF	REF	REF	8	
M-H		A179 LEAD, ELECTRI CAL SMB314932 (80063)	ea	1									8	1
P-F	5940-504-5787	A180 TERMINAL LUG SAME AS A176	ea	1	REF	REF	REF	REF	REF	REF	REF	REF	8	
M-H		A181 LEAD, ELECTRI CAL SMB314933 (80063)	ea	1									8	3
P-F	5940-304-5787	A182 TERMINAL LUG SAME: AS A176	ea	1	REF	REF	REF	REF	REF	REF	REF	REF	8	
P-F	5815-537-7682	A183 LEVER SMB157516 (80061)	ea	1	*	*	*	*	*	*	5	2	5	22
M-H		A184 LEAD, ELECTRI CAL SMB157532 (80063)	ea	1									8	17
P-F	5940-557-1627	A185 TERMINAL LUG 34122 (00779)	ea	2	*	*	2	*	*	2	10	4	8	
X2-R	5815-617-4429	A186 COVER, TELETYPE WRITER SMB331454 (80063)	ea	1									1	11
P-F	5310-616-3555	A187 WASHER, LOCK SAME AS A008	ea	4	REF	REF	REF	REF	REF	REF	REF	REF	1	8
P-F		A188 SCREW, MACHINE 12357 (82423)	ea	2	2	2	2	*	2	2	16	8	1	7
P-F	5305-842-1427	A189 SCREW, MACHINE SAME AS A020	ea	2	REF	REF	REF	REF	REF	REF	REF	REF	6	34
P-F	5325-174-5317	A190 GROMMET, RUBBER MS35489-4 (96906)	ea	4	2	2	2	*	2	2	19	10	1	10
P-F	5815-692-6842	A191 BUSHING, SLEEVE SMB57388 (80063)	ea	4	2	2	2	*	2	2	19	10	1	9
X2-H	5815-617-6340	A192 COVER, TELETYPE WRITER SMB331456 (80063)	ea	1									1	6
P-F	5915-501-046	A193 FILTER SMC157655 (80063)	ea	1	*	*	2	*	*	*	8	3	8	14
P-F	5815-322-5581	A194 COLLAR, TANG DRIVE SMB171537 (80063)	ea	1	*	*	*	*	*	*	5	2	6	5
P-F	5815-340-3720	A195 DISK, FRICTION SMB186882 (80063)	ea	1	*	*	2	*	*	*	8	3	6	6
P-F	5815-663-3296	A196 SPRING, HELICAL COMPRESSION SMB171534 (80063)	ea	1	*	*	2	*	*	*	8	3	6	3

SECTION V REPAIR PARTS FOR DIRECT SUPPORT, GENERAL SUPPORT, AND DEPOT MAINTENANCE (CONT)

(1) SMR CODE	(2) FEDERAL STOCK NUMBER	(3) DESCRIPTION		(4) QTY OF MEAS	(5) QTY INC IN UNIT	(6) 30-DAY DS MAINT ALLOWANCE			(7) 30-DAY GS MAINT ALLOWANCE			(8) 1 YR ALW PER EQUIP CNTGCTY	(9) DEPOT MAINT ALW PER 100 EQUIP	(10) ILLUSTRATIONS			
						REFERENCE NUMBER & MFR. CODE	USABLE ON CODE	(a)	(b)	(c)	(a)			(b)	(c)	(a) FIG NO.	(b) ITEM NO. OR REF. DESIGN.
								1-20	21-50	51-100	1-20			21-50	51-100		
P-F	5815-322-5609	A197	LATCH, STOP SMB171361 (80063)	ea	1	*	*	*	*	*	*	5	2	3	35		
P-F	5310-537-8631	A198	WASHER, FLAT SHMB187268 (80063)	ea	2	*	*	*	*	*	*	5	2	3	28, 29		
P-F	5330-641-3180	A199	WASHER, NON METALLIC SMB187300 (80063)	ea	1	*	*	*	*	*	*	5	2	2	13		
P-F	5815-570-3493	A200	SPACER SMB314717 (80063)	ea	2	*	*	*	*	*	*	5	2	6	16,18		
P-F	5815-600-3005	A201	COLLAR, SHAFT SMB314726 (80063)	ea	1	*	*	2	*	*	*	8	3	6	2		
P-F	5305-297-7965	A202	SCREW, CAP, SOC KET READ 10043 (82423)	ea	2	*	*	2	*	*	2	10	4	6	1		
P-F	5815-588-0944	A203	LEVER ASSEMBLY SMB314761 (80063)	ea	1	*	*	*	*	*	*	5	2	3	22		
P-F	5815-608-8708	A204	SHAFT, CLUTCH SMB331524 (80063)	ea	1	*	*	*	*	*	*	5	2	6	11		
P-F	5815-540-7270	A205	GEAR, SPUR SMB331527 (80063)	ea	1	*	*	2	*	*	*	8	3	6	8		
A-F		A206	WIRING HARNESS, BRANCHED SMC331463 (80063)	ea	1									14	19		
P-F	5940-231-4430	A207	TERMINAL LUG 32561 (00779)	ea	4	*	*	2	*	*	2	10	4	14			
P-F	5940-504-5787	A208	TERMINAL LUG SAME AS A176	ea	4	REF	REF	REF	REF	REF	REF	REF	REF	14			
P-F	5015-504-0232	A209	LEVER SMC331464 (80063)	ea	1	*	*	*	*	*	*	5	2	3	2		
M-D		A210	PLATE, DESIG NATION SMB331465 (80063)	ea	1									1	5		
P-F	5310-616-3555	A211	WASHER, LOCK SAME AS A008	ea	2	REF	REF	REF	REF	REF	REF	REF	REF	1	2		
P-F		A212	SCREW, MACHINE SAME AS A188	ea	2	REF	REF	REF	REF	REF	REF	REF	REF	1	1		
P-F	5325-176-5317	A213	GROMMET, RUBBER SAME AS A190	ea	2	REF	REF	REF	REF	REF	REF	REF	REF	1	4		
P-F	5815-692-6842	A214	BUSHING, SLEEVE SAME AS A191	ea	2	REF	REF	REF	REF	REF	REF	REF	REF	1	3		
P-F	5950-609-4145	A215	COIL, ELECTRO MAGNETIC ACTUATOR SMB331466 (80063)	ea	1	*	*	2	*	*	*	8	3	8	25		
P-F	5305-206-2476	A216	SCREW, CAP, SOC KET HEAD 10010 (82423)	ea	2	*	*	2	*	*	2	10	4	8	22		
P-F	5310-721-7810	A217	WASHER, LOCK SAME AS A012	ea	2	REF	REF	REF	REF	REF	REF	REF	REF	8	23		
P-F	5310-209-0574	A218	WASHER, FLAT 10454 (82423)	ea	2	*	*	*	*	*	*	5	2	8	24		
P-F	5940-504-5787	A219	TERMINAL LUG SAME AS A176	ea	2	REF	REF	REF	REF	REF	REF	REF	REF	8	23		
X-D		A220	FRAME, TRANSMIT TER DISTRIBUTOR	ea	1									9	12		
P-F	5330-776-2693	A221	FELT, MECHANICAL, PREFORMED 61744A (82423)	ea	2	2	2	2	*	2	2	19	10	14	7,9		

SECTION V REPAIR PARTS FOR DIRECT SUPPORT, GENERAL SUPPORT, AND DEPOT MAINTENANCE (CONT)

(1) SMR CODE	(2) FEDERAL STOCK NUMBER	(3) DESCRIPTION		(4) QTY OF MEAS	(5) QTY INC IN UNIT	(6) 30-DAY DS MAINT ALLOWANCE			(7) 30-DAY GS MAINT ALLOWANCE			(8) 1 YR ALW PER EQUIP CNTGCTY	(9) DEPOT MAINT ALW PER 100 EQUIP	(10) ILLUSTRATIONS			
						REFERENCE NUMBER & MFR. CODE	USABLE ON CODE	(a)	(b)	(c)	(a)			(b)	(c)	(a) FIG NO.	(b) ITEM NO. OR REF. DESIGN.
								1-20	21-50	51-100	1-20			21-50	51-100		
P-F	5330-735-3438	A222	FELT SMB321675 (80063)	ea	1	*	2	2	*	2	2	12	5	4	22		
P-F	5330-841-7418	A223	FELT, MECHANI CAL, PREFORMED SMB321683 (80063)	ea	7	2	3	5	2	2	2	59	40	3	23,24,25,26 5 40		
P-F	5330-844-0679	A224	WASHER, NON METALLIC 61477 (82423)	ea	1	*	2	2	*	2	2	12	5	3	25		
P-F	5330-841-6380	A225	WASHER, NON METALLIC SMB321688 (80063)	ea	1	*	2	2	*	2	2	12	5	5	39		
P-F	5815-019-0094	A226	COVER ASSEMBLY 65470A (82423)	ea	1	*	*	*	*	*	*	5	2	1			
P-F	5305-616-2209	A227	SCREW, CAP, SOC KET HEAD SAME AS A003	ea.	2	REF	REF	REF	REF	REF	REF	REF	REF	1	22		
P-F	5305-983-7427	A228	SCREW, CAP, SOC KET HEAD SAME AS A004	ea.	1	REF	REF	REF	REF	REF	REF	REF	REF	1	24		
P-F		A229	WASHER, LOCK SAME AS A011	ea.	3	REF	REF	REF	REF	REF	REF	REF	REF	1	23,25		
P-F	5305-983-6649	A230	SCREW, CAP, SOC KET HEAD SAME AS A088	ea.	2	REF	REF	REF	REF	REF	REF	REF	REF	1	28		
P-F	5305-014-0853	A231	SETSCREW SAME AS A090	ea	1	REF	REF	REF	REF	REF	REF	REF	REF	1	12		
P-F	5305-408-0044	A232	SETSCREW SAME AS A094	ea	2	REF	REF	REF	REF	REF	REF	REF	REF	1	26,27		
P-F		A233	WASHER, LOCK SAME AS A010	ea	2	REF	REF	REF	REF	REF	REF	REF	REF	1	29		
P-F	5815-392-9544	A234	LATCH, PIVOT SMB157379 (80063)	ea	2	*	*	*	*	*	*	5	2	1	13		
P-F	5815-588-0954	A235	SHIM SMB38314759 (80063)	ea	2	*	*	2	*	*	2	10	4	1	31		
P-F	5815-588-0953	A236	SHIM SMB314957 (80063)	ea	2	*	*	2	*	*	2	10	4	1	32		
P-F	5815-543-4288	A237	SPRING, HELICAL COMPRESSION SMB314848 (80063)	ea	1	*	*	2	*	*	*	8	3	1	15		
P-F	5815-608-8710	A238	LATCH SMB314760 (80063)	ea	1	*	*	*	*	*	*	5	2	1	14		
X1-F		A239	HINGE, TAPE COVER SMB331458 (80063)	ea	1									1			
P-F	5305-297-7894	A240	SETSCREW MS51020-27 (96906)	ea	2	*	*	2	*	*	2	10	4	1	19		
P-F	5815-521-1391	A241	GUIDE, TAPE SMB157347 (80063)	ea	1	*	*	*	*	*	*	5	2	1	20		
P-F	5305-534-3020	A242	SCREW, MACHINE SMB157401 (80063)	ea	2	*	*	2	*	*	2	10	4	1	18		
P-F	5815-663-3364	A243	SPRING, HELICAL TORSION SMB157670 (80063)	ea	1	*	2	*	*	*	*	8	3	1	17		
P-F	5315-588-0968	A244	PIN, STRAIGHT HEADLESS SMB314764 (80063)	ea	1	*	*	*	*	*	*	5	2	1	16		
X2-F	5815-630-7847	A245	BLOCK, MOUNTING SMB331459 (80063)	ea	1										30		

SECTION V REPAIR PARTS FOR DIRECT SUPPORT, GENERAL SUPPORT, AND DEPOT MAINTENANCE (CONT)

(1) SMR CODE	(2) FEDERAL STOCK NUMBER	(3) DESCRIPTION REFERENCE NUMBER & MFR. CODE		(4) QTY OF MEAS	(5) QTY INC IN UNIT	(6) 30-DAY DS MAINT ALLOWANCE			(7) 30-DAY GS MAINT ALLOWANCE			(8) 1 YR ALW PER EQUIP CNTGCTY	(9) DEPOT MAINT ALW PER 100 EQUIP	(10) ILLUSTRATIONS		
						USABLE ON CODE	(a)	(b)	(c)	(a)	(b)			(c)	(a) FIG NO.	(b) ITEM NO. OR REF. DESIGN.
							1-20	21-50	51-100	1-20	21-50			51-100		
P-F	5815-953-2321	A246	COVER, TAPE HINGE 64045A (82423)	ea	1	*	*	*	*	*	*	5	2	1	21	
P-H		A246A	COVER, DISTRIBU TOR TRANSMITTER SMB331460 (80063)	ea	1				*	*	*	4	1	1	33	
M-N		A247	PLATE, SPACER 67244 (82423)	ea	1									1	35	
P-F	5815-356-3302	A248	DISK, STROBO SCOPE SCB70495 (80063)	ea	1	*	*	2	*	*	*	8	3	13	15	
X2-P	6105-660-8165	A249	COVER, GOVERNOR SCB69662 (80063)	ea	1									13	18	
P-F	5977-232-5279	A250	BRUSH, ELECTRI CAL CONTACT SCB69670 (80063)	ea.	1	2	3	6	2	2	2	71	50	13	22	
P-F	6110-557-3970	A251	GOVERNOR, MOTOR SC570500 (80063)	ea	1	*	*	2	*	*	*	8	3	13		
P-F	5305-280-2083	A252	SCREW, CAP, SOC KET HEAD SAME AS A005	ea.	1	REF	REF	REF	REF	REF	REF	REF	REF	13	27	
P-F	5305-579-5304	A253	SETSCREW MS51019-35 (96906)	ea.	2	*	*	2	*	*	2	10	4	13	14	
P-F	5310-543-2739	A254	WASHER, LOCK MS35333-72 (96906)	ea.	1	*	*	*	*	*	*	4	1	13	32	
P-F	5310-595-5969	A255	WASHER, FLAT SAME AS A098	ea	2	REF	REF	REF	REF	REF	REF	REF	REF	13	28	
P-F	5310-546-6858	A256	NUT, PLAIN, HEXAGON 10507 (82423)	ea	1	*	*	*	*	*	*	5	2	13	31	
P-F	5315-243-1173	A257	PIN, COTTER 10800 (82423)	ea	2	*	*	2	*	*	2	10	4	13	34,36	
P-F	5310-883-9487	A258	NUT, SELF-LOCK ING, HEXAGON F22NM60 (72962)	ea	1	*	*	*	*	*	*	5	2	13	26	
P-F	5310-523-2003	A259	WASHER, THRUST SCB69389-3 (80063)	ea	1	*	*	*	*	*	*	4	1	13	38	
P-F	5815-351-7895	A260	GEAR, SPUR SCB69786 (80063)	ea	1	*	*	2	*	*	*	8	3	13	40	
P-F	6110-242-4631	A261	CONTACT, ELEC TRICAL SCB69789 (80063)	ea	1	*	*	3	*	*	*	8	3	13	29	
P-F	5970-351-7898	A262	INSULATOR, BUSH ING SCB69779 (80063)	ea	1	*	*	*	*	*	*	4	1	13	30	
P-F	5305-537-7641	A263	SCREW, ADJUST MENT SCB69780 (80063)	ea.	1	*	*	*	*	*	*	5	2	13	37	
P-F	5815-356-3301	A264	LEVER SCB69782 (80063)	ea	1	*	*	*	*	*	*	5	2	13	35	
P-F	5815-351-7900	A265	PIN, ANCHOR SCB69783 (80063)	ea	1	*	*	*	*	*	*	5	2	13	25	
P-F	5815-598-4964	A266	SPRING, HELICAL EXTENSION SCB69337-7 (80063)	ea	1	*	*	2	*	*	*	8	3	13	24	
P-F	6110-636-7940	A267	CONTACT, ELEC TRICAL SCB69784 (80063)	ea	1	*	*	2	*	*	*	8	3	13	33	

SECTION V REPAIR PARTS FOR DIRECT SUPPORT, GENERAL SUPPORT, AND DEPOT MAINTENANCE (CONT)

(1) SMR CODE	(2) FEDERAL STOCK NUMBER	(3) DESCRIPTION		(4) QTY OF MEAS	(5) QTY INC IN UNIT	(6) 30-DAY DS MAINT ALLOWANCE			(7) 30-DAY GS MAINT ALLOWANCE			(8) 1 YR ALW PER EQUIP CNTGCTY	(9) DEPOT MAINT ALW PER 100 EQUIP	(10) ILLUSTRATIONS			
						REFERENCE NUMBER & MFR. CODE	USABLE ON CODE	(a)	(b)	(c)	(a)			(b)	(c)	(a) FIG NO.	(b) ITEM NO. OR REF. DESIGN.
								1-20	21-50	51-100	1-20			21-50	51-100		
X1-F		A268	GOVERNOR, BASE SCC70510 (80063)	ea	1									13	41		
P-F		A269	WASHER, THRUST SMB321537 (80063)	ea	1	*	*	*	*	*	*	5	2	13	39		
P-F	5815-597-8320	A270	SPRING, HELICAL EXTENSION SCB70501 (80063)	ea	1	*	*	2	*	*	*	8	3	13	20		
P-F	5815-697-7889	A271	GEAR, WORM SMB196132 (80063)	ea	1	*	*	2	*	*	*	8	3	13	6		
P-F	5815-521-1401	A272	WORM, GOVERNOR ADJUSTMENT SMB171471 (80063)	ea	1	*	*	2	*	*	*	8	3	13	21		
A-F-R		A273	MOTOR, UNIVER SAL 63324A (82423)	ea	.1									13			
P-F	5305-207-5576	A274	SCREW, CAP, SOC KET HEAD 10026 (82423)	ea	4	2	2	2	*	2	2	16	8	13	1		
P-F	5310-543-5933	A275	WASHER, LOCK SAME AS A085	ea	4	REF	REF	REF	REF	REF	REF	REF	REF	13	2		
P-F	5310-596-7580	A276	WASHER, FLAT 10481 (82423)	ea	4.	*	*	2	*	*	2	10	4	13	3		
P-F	5310-261-7155	A277	WASHER, LOCK 172402 (78189)	ea	1.	*	*	*	*	*		4	1	13	12		
P-F	5940-204-8990	A278	TERMINAL LUG SAME AS A066	ea	1	PEF	PEF	PEF	REF	REF	REF	REF	REF	13	8		
P-F	5940-680-9738	A279	TERMINAL LUG SAME AS A053	ea	4.	REF	REF	REF	REF	REF	REF	REF	REF	13	9		
P-F	6105-259-9166	A280	MOTOR, UNIVER SAL 65309A (82423)	ea	1	*	*	*	*	*	*	4	2	13	45		
P-H	5305-656-0181	A281	SCREW, MACHINE 10172 (82423)	ea	4				*	2	2	16	8	13	32		
P-H	5305-988-0923	A282	SCREW, MACHINE 10384 (82423)	ea	1				*	*	2	10	4	13	62		
P-H		A283	WASHER, LOCK 161000 (78189)	ea	2.				*	*	*	5	2	13	63		
P-H	5310-198-3724	A284	WASHER, LOCK MS35337-41 (96906)	ea	4				*	*		10	4	13	53		
P-H	5910-666-8278	A285	CAP, FIXED, PAP ER, DIELECTRIC CP05A1KF104K (81349)	ea	2				*	2	2	13	6	13	76		
P-H	5910-666-8278	A286	CAP, FIXED, PAP ER, DIELECTRIC SAME AS A285	ea.	REF				REF	REF	REF	REF	REF	13	76		
P-H	5315-547-9203	A287	PIN, STRAIGHT, HEADLESS SCB69682 (80063)	ea	1				*	*	*	5	2	13	7		
P-H	5305-521-0612	A288	FELT, MECHANI CAL, PREFORMED SCB69683 (80063)	ea	4				2	2	2	33	20	13			
P-H	6105-705-2652	A289	RETAINER, BEAR ING: 60491 (82423)	ea	1				*	*	*	5	2	13	66		
P-H	5340-656-0160	A290	SHIM 60493 (82423)	ea	1				*	*	*	4	1	13	56		
P-H	3305-656-0106	A291	SCREW, MACHINE 60494 (82423)	ea.	8				2	2	2	27	15	13	46		

SECTION V REPAIR PARTS FOR DIRECT SUPPORT, GENERAL SUPPORT, AND DEPOT MAINTENANCE (CONT)

(1) SMR CODE	(2) FEDERAL STOCK NUMBER	(3) DESCRIPTION		(4) QTY OF MEAS	(5) QTY INC IN UNIT	(6) 30-DAY DS MAINT ALLOWANCE			(7) 30-DAY GS MAINT ALLOWANCE			(8) 1 YR ALW PER EQUIP CNTGCV	(9) DEPOT MAINT ALW PER 100 EQUIP	(10) ILLUSTRATIONS			
						REFERENCE NUMBER & MFR. CODE	USABLE ON CODE	(a)	(b)	(c)	(a)			(b)	(c)	(a) FIG NO.	(b) ITEM NO. OR REF. DESIGN.
								1-20	21-50	51-100	1-20			21-50	51-100		
P-F	5977-688-4398	A292	CAP, ELECTRICAL 60495	(82423)	ea	.2	*	*	*	*	*	*	5	2	13	42	
P-F		A293	CAP, ELECTRICAL 60496	(82423)	ea.	2	*	*	*	*	*	*	5	2	13	43	
P-H	6105-705-2651	A294	RETAINER, BEAR ING	(82423)	ea	1			*	*	*		4	1	13	47	
P-H	5310-656-0100	A295	WASHER, SPRING TENSION	(82423)	ea	1			*	*	2		10	4	13	51	
P-F	5977-686-5195	A296	BRUSH, ELECTRI CAL, CONTACT	(82423)	ea	2	10	2	5	47	6	9	12	567	500	13	44
P-H	5340-682-2171	A297	SHIM 60506	(82423)	ea	2			*	*	*		5	2	13	50	
X1-4		A298	ARMATURE, MOTOR 64751A	(82423)	ea	1									13	58	
P-H	3110-542-0120	A298A	BEARING, BALL, ANNULAR	(21335)	ea	1				*	*	2		10	4	13	55
P-H	3110-841-0337	A298B	BEARING BALL, ANNULAR	(21333)	ea	1				*	*	2		10	4	13	57
X2-H		A299	END BELL 64752	(82423)	ea	1									13	54	
X1-H		A300	WINDING, MOTOR FIELD	(82423)	ea	1									13	78	
X2-H	5815-944-0711	A301	PLATE, BAFFLE 64755	(82423)	ea	1									13	64	
X2- A		4302	END BELL 64797A	(82423)	ea	1									13	71	
P-F	5977-059-8680	A303	BRUSH, ELECTRI CAL CONTACT	(80063)	ea	2	2	6	11		2	2	3	130	100	13	23
P-F	5310-842-1776	A304	WASHER, FLAT SMB321767 (S0063)		ea	4	*	*	2		*	*	2	10	4	14	61,66

SECTION VII INDEX-FEDERAL STOCK NUMBER AND REFERENCE NUMBER CROSS REFERENCE

TO FIGURE AND ITEM NUMBER OR REFERENCE DESIGNATION (TT-123A/FG)

FEDERAL STOCK NUMBER	FIGURE NUMBER	ITEM NUMBER OR REF DESIGNATION	FEDERAL STOCK NUMBER	FIGURE NUMBER	ITEM NUMBER OR REF DESIGNATION
3110-144-8865	10	22	5305-985-0270	10	20
3110-155-9628	6	24,26	5305-988-0925	13	62
3110-542-0120	13	55	5306-600-3058	10	14
3110-841-0337	13	57			
5305-014-0853	8	29	5310-176-8119	4	3,4
5305-206-2476	8	22	5310-198-3724	13	53
5305-207-5576	13	1	5310-205-8930	7	12
5305-208-1862	13	16	5310-208-4124	14	35
5305-286-2083	14	1	5310-209-0574	8	24
5305-297-7721	2	10	5310-209-1366	14	5,13,15
5305-297-7894	1	19	5310-227-6574	14	3
5305-297-7905	5	24,29	5310-261-7155	13	12
5305-297-7965	6	1	5310-297-8940	8	4
5305-297-7966	7	4	5310-298-8157	14	39
5305-297-9172	9	1	5310-521-8475	5	6,9,15, 18,21
5305-393-1917	9	3			
5305-408-0044	1	26,27	5310-521-8552	10	17
5305-521-0612	13		5310-523-2003	13	38
5305-521-8637	5	33	5310-537-8631	3	28,29
5305-534-3020	1	18	5310-543-2739	13	32
5305-537-7641	13	37	5310-543-5933	9	2
5305-579-5304	13	14	5310-545-8406	6	20
5305-594-1028	10	1	5310-546-6858	13	31
5305-616-6382	6	4	5310-550-1154	2	1,2
5305-656-0106	13	46	5310-576-1352	10	15
5305-656-0181	13	52	5310-595-5969	5	41
5305-660-1939	8	8	5310-596-7580	13	3
			5310-600-2828	3	5
			5310-616-3555	14	29,47
5305-826-7780	14	40	5310-638-5179	10	19
			5310-656-0100	13	51
5305-842-1427	14	28,46	5310-721-7810	14	36
5350-883-0749	14	59	5310-800-3225	10	27
5305-926-5657	3	7	5310-842-1776	14	61,66
5305-983-6649	6	13	5310-883-9487	13	26
5305-983-7427	14	58,64	5315-243-1173	13	34,36

SECTION VII INDEX-FEDERAL STOCK NUMBER AND REFERENCE NUMBER CROSS REFERENCE

TO FIGURE AND ITEM NUMBER OR REFERENCE DESIGNATION (CONTINUED)

FEDERAL STOCK NUMBER	FIGURE NUMBER	ITEM NUMBER OR REF DESIGNATION	FEDERAL STOCK NUMBER	FIGURE NUMBER	ITEM NUMBER OR REF DESIGNATION
5315-547-9203	13	7	5815-356-3301	13	3
5315-588-0968	1	16	5815-356-3302	13	15
5315-597-9673	3	18	5815-356-3307	4	5
5315-839-2326	10	2,4	5815-356-3494	7	6
5325-174-5317	1	10	5815-356-3515	7	9
5325-875-7150	10	6			
5330-641-3180	2	13			
5330-735-3438	4	22	5815-356-3519	5	4
5330-776-2693	6	7,9			
5330-841-6380	5	39	5815-392-7847	7	3
5330-841-7418	3,	23,24,26	5815-392-7849	3	34
5330-844-0679	3	25	5815-392-7850	3	19
5340-081-2987	14	11	5815-392-7853	4	14
5340-205-6552	4	8,9,10, 11,12	5815-392-7854	2	7
			5815-392-7857	5	23
5340-282-2426	3	1,3,14, 16,17,21	5815-392-7858	4	13
5340-399-7867	14	8	5815-392-7859	7	18
5340-514-1811	2	3,4	5815-392-7860	5	25
5340-597-2288	4	6	5815-392-7861	5	36
5340-597-9492	5	26	5815-392-7862	5	30
5340-656-0160	13	56	5815-392-7864	5	28
5340-682-2171	13	50	5815-392-7866	6	25
5340-881-1205	14	54	5815-392-7867	4	15
5815-019-0094	1		5815-392-7868	2	12
5815-030-0432	4	19	5815-392-7869	3	15
5815-092-1440	5	12	5815-392-7870	6	15
5815-099-0653	6	17	5815-392-7871	8	20
5815-200-7858	8	26	5815-392-9544	1	13
5815-219-7019	8	30	5815-393-1919	6	19
5815-322-5581	6	5	5815-521-1391	1	20
5815-322-5609	5	35	5815-521-1401	13	21
5815-330-9941	5	5	5815-534-3010	10	3
5815-340-3720	6	6	5815-534-3011	10	5
5815-351-7895	13	40	5815-537-7682	5	22
5815-351-7900	13	25	5815-540-7270	6	8

SECTION VII INDEX-FEDERAL STOCK NUMBER AND REFERENCE NUMBER CROSS REFERENCE

TO FIGURE AND ITEM NUMBER OR REFERENCE DESIGNATION (CONTINUED)

FEDERAL STOCK NUMBER	FIGURE NUMBER	ITEM NUMBER OR REF DESIGNATION	FEDERAL STOCK NUMBER	FIGURE NUMBER	ITEM NUMBER OR REF DESIGNATION
5815-543-4288	1	15	5815-944-0711	13	64
			5905-683-6375	14	38
5815-570-3493	6	16,18	5910-112-7401	14	27
			5910-666-8278	13	76
5815-588-0944	3	22	5915-501-0546	8	14
5815-588-0953	1	32	5915-523-1968	14	23
5815-588-0954	1	31	5920-131-9819	14	49
5815-597-2275	4	1	5920-244-5150	14	48
5815-597-2285	3	20			
5815-597-7563	2	6			
5815-597-8320	13	20	5930-548-4893	3	11
5815-598-4964	13	24	5930-786-4040	14	31
5815-598-4965	5	1	5935-201-7941	14	16
5815-600-3005	6	2	5935-636-7145	14	P2
5815-608-8706	7	10			
5815-608-8707	10	23	5940-204-7911	7	19
5815-608-8708	6	11			
			5940-231-4430	14	
5815-608-8710	1	14			
5815-617-4429	1	11	5940-501-7669	14	
5815-617-5515	10	8	5940-504-5787	3	
5815-617-6340	1	6			
5815-630-7847	1	30			
5815-649-5289	4	16	5940-581-0689	8	10
5815-650-4392	8	21	5940-581-3178	14	62
5815-663-3296	6	3	5940-609-9665	10	21
5815-663-3364	1	17	5940-680-9738	14	
5815-677-4455	2	25	5945-259-6126	8	28
5815-692-6842	1	9	5950-609-4145	8	25
5815-697-7889	13	6	5970-351-7898	13	30
5815-697-7890	10	16	5975-273-0788	14	55,56
			5977-059-8680	13	23
			5977-232-5279	13	22
			5977-686-5195	13	44

**SECTION VII INDEX-FEDERAL STOCK NUMBER AND REFERENCE NUMBER CROSS REFERENCE
TO FIGURE AND ITEM NUMBER OR REFERENCE DESIGNATION (CONTINUED)**

FEDERAL STOCK NUMBER	FIGURE NUMBER	ITEM NUMBER OR REF DESIGNATION	FEDERAL STOCK NUMBER	FIGURE NUMBER	ITEM NUMBER OR REF DESIGNATION
5977-688-4398	13	42			
5995-511-6632	3	12			
6105-635-0127	13	45			
6105-660-8165	13	18			
6105-705-2651	11	47			
6105-705-2652	13	66			
6110-242-4631	13	29			
6110-557-3970	13				
6110-636-7940	13	33			
6145-660-9321	14				
6145-988-5760	14				
9320-125-8814	10	7			

SECTION VII INDEX FEDERAL STOCK NUMBER AND REFERENCE NUMBER CROSS REFERENCE

TO FIGURE AND ITEM NUMBER OR REFERENCE DESIGNATION (CONTINUED)

REFERENCE NO.	MFR CODE	FIG. NO.	ITEM NO. OR REF. DESIGNATION	REFERENCE NO.	MFR CODE	FIG. NO.	ITEM NO. OR REF. DESIGNATION
C3044F135	78553	3	13	<u>LATEST FEDERAL STOCK NUMBER ASSIGNMENTS</u>			
MS35339-60	96906	14	2,7, 10,22, 26,42				
SMB331452	80063	10	1	FEDERAL STOCK NUMBER	FIGURE NUMBER	ITEM NO. OR REF. DESIGNATION	
SMB331460	80063	1	33	5305-616-2209	10	25	
SMB331485	80063	14	17	5815-084-0232	3	2	
SMB331490	80063	10	24	5940-204-8990	14		
SMB331497	80063	14	43,44	5940-557-1627	8		
SMB331501	80063	14	4	5940-804-0365	7	20, 21	
SMB321527	80063	13	39				
SMC331463	80063	14	19				
SMC331474	80063	10					
SMC331483	80063	14	57				
SMC331495	80063	14	18				
SMC331496	80063	14	20				
41403/4WAEX	71785	14	67				
10409	82423	14	51				
10484	82423	14	52				
12301	82423	8	12				
12385	82423	3	6				
60496	82423	13	43				
63293A	82423	1					
63324A	82423	13					
64751A	82423	13	58				
64752	82423	13	54				
64753A	82423	13	78				
64797A	82423	13	71				
161000	78189	13	63				
170601	78189	13	17				

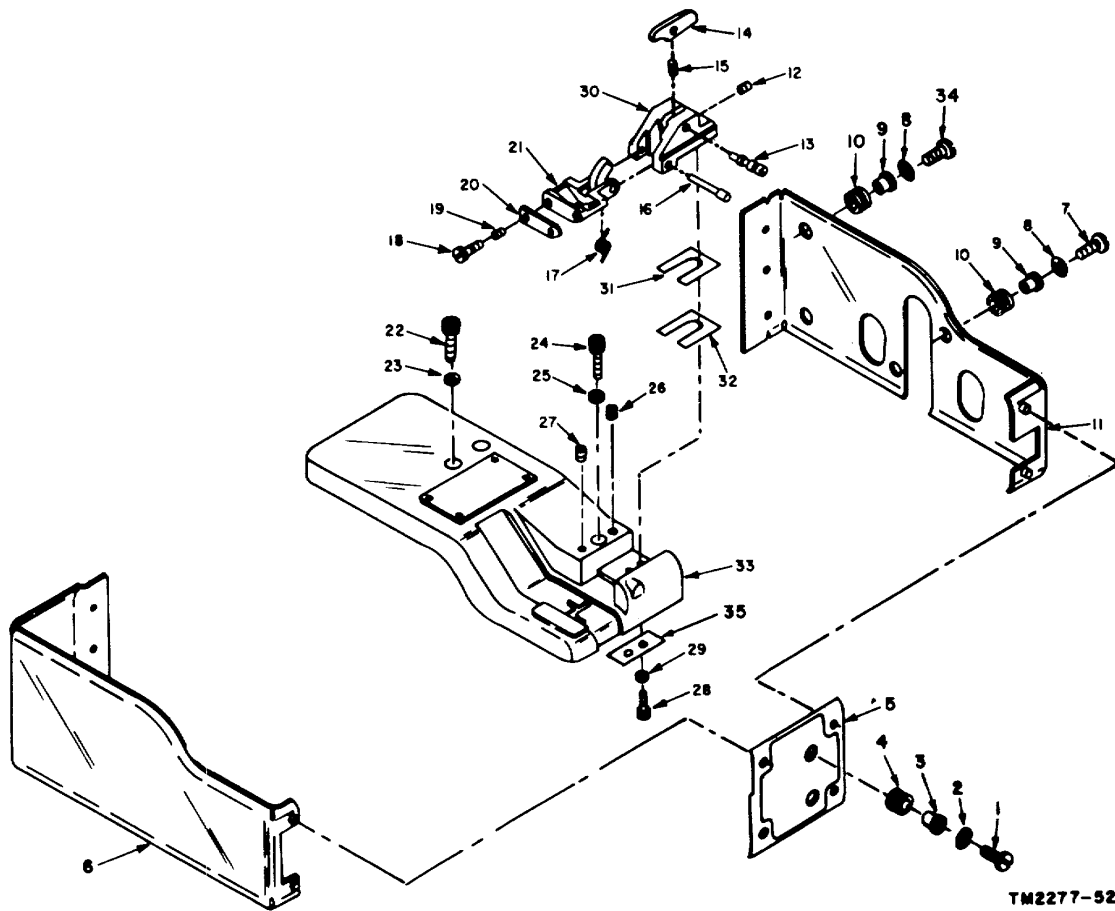


Figure 1. Tape transmitter cover.

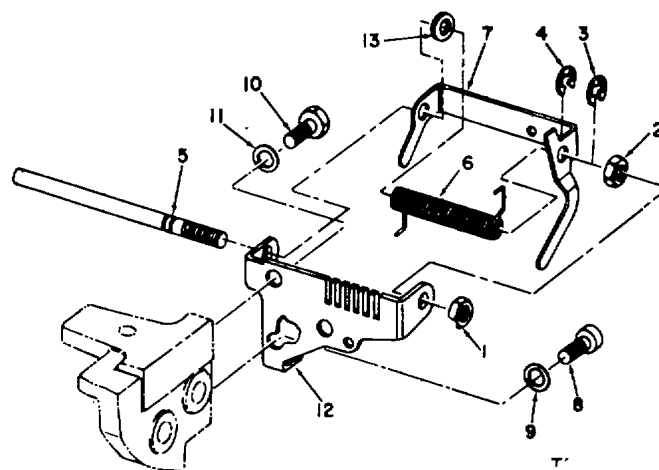
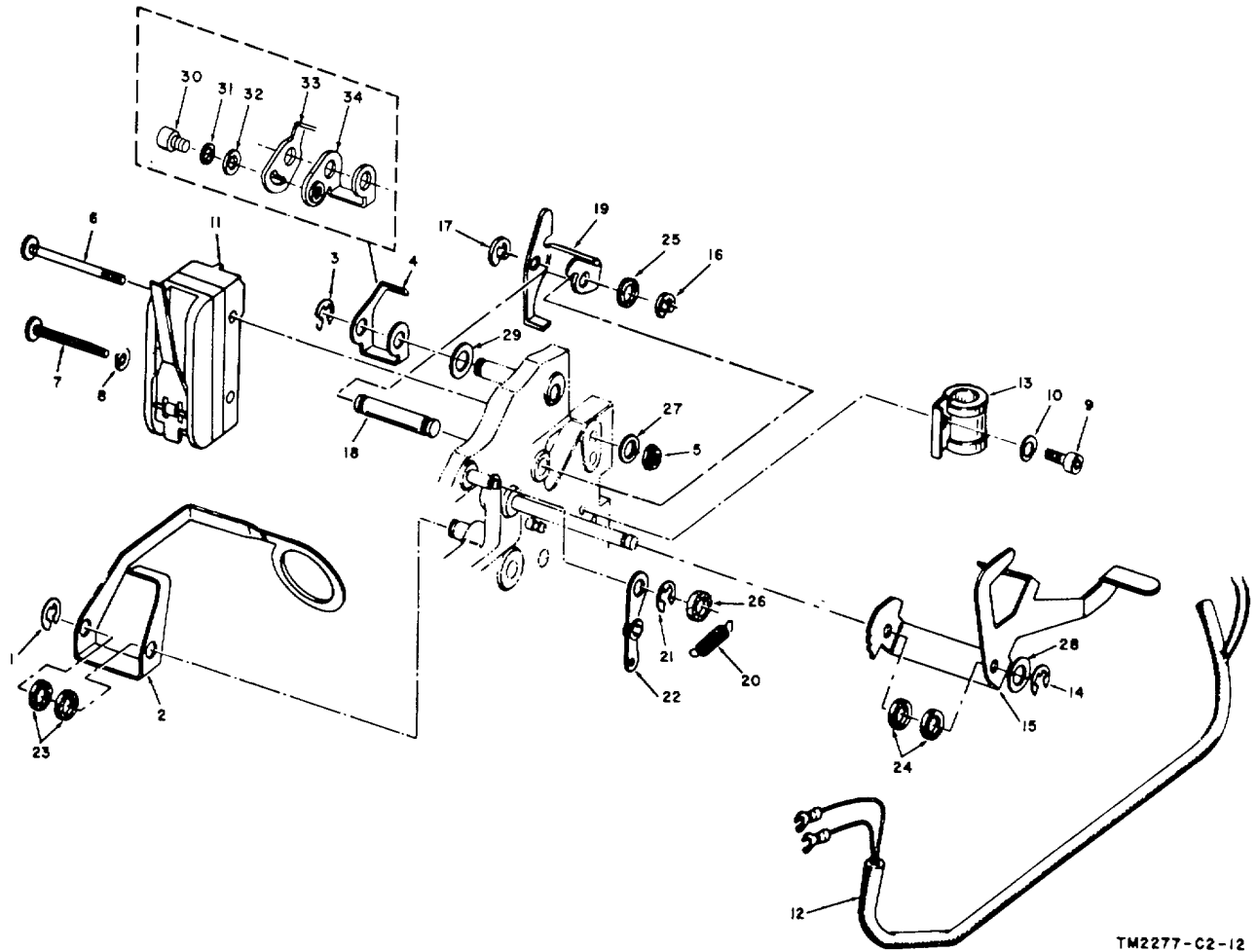
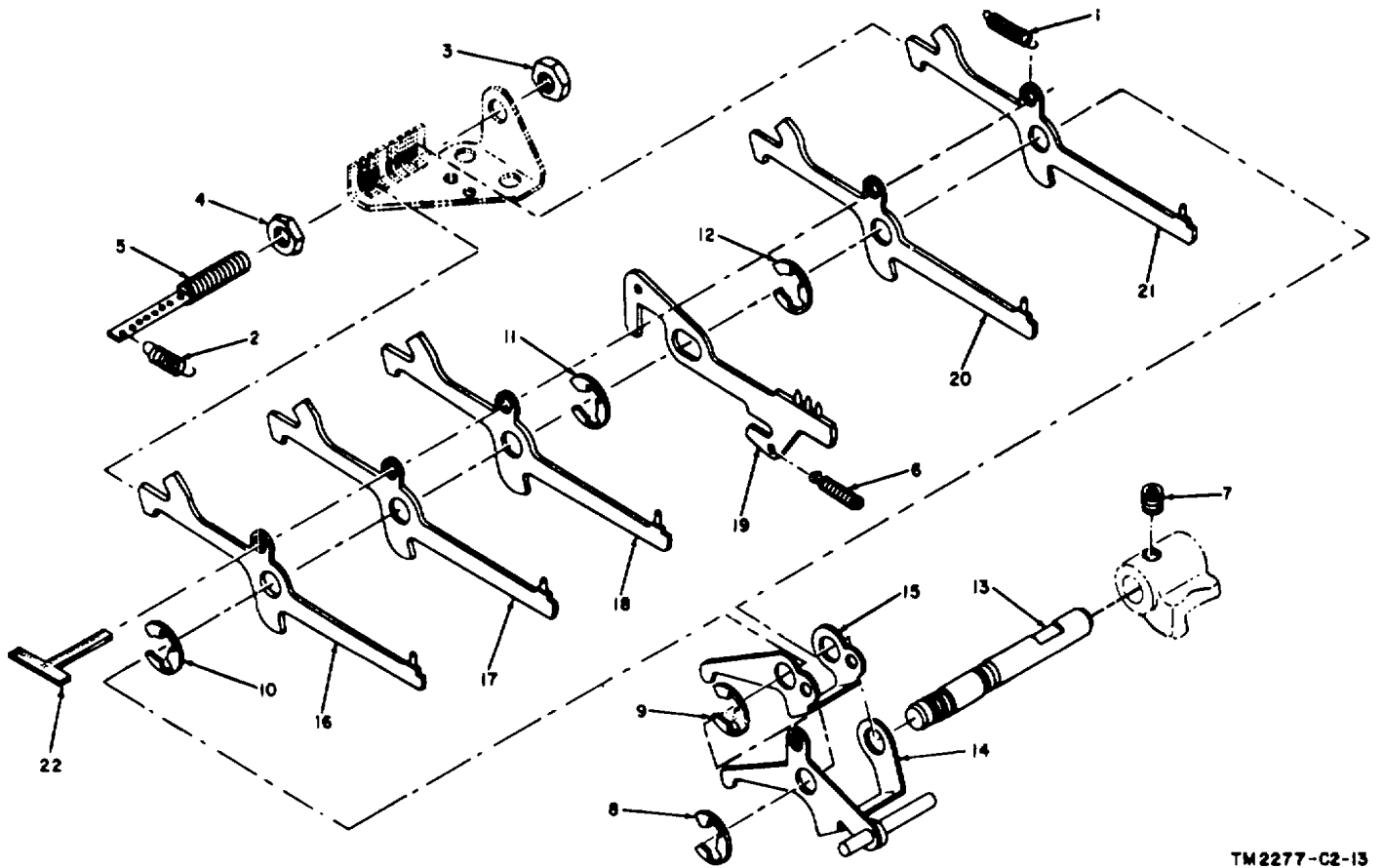


Figure 2. Tape-out sensing mechanism.



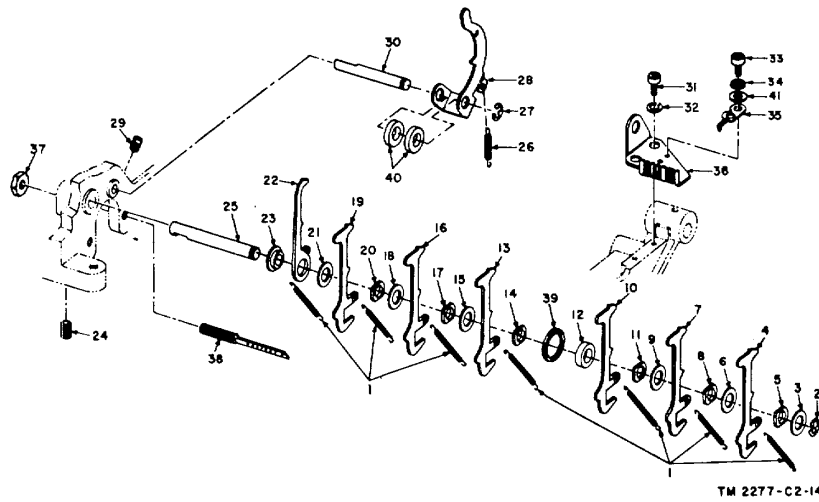
TM2277-C2-12

Figure 3. Tape transmitter operating levers.



TM2277-C2-13

Figure 4. Code sensing levers.



TM 2277-C2-14

Figure 5. Selector levers.

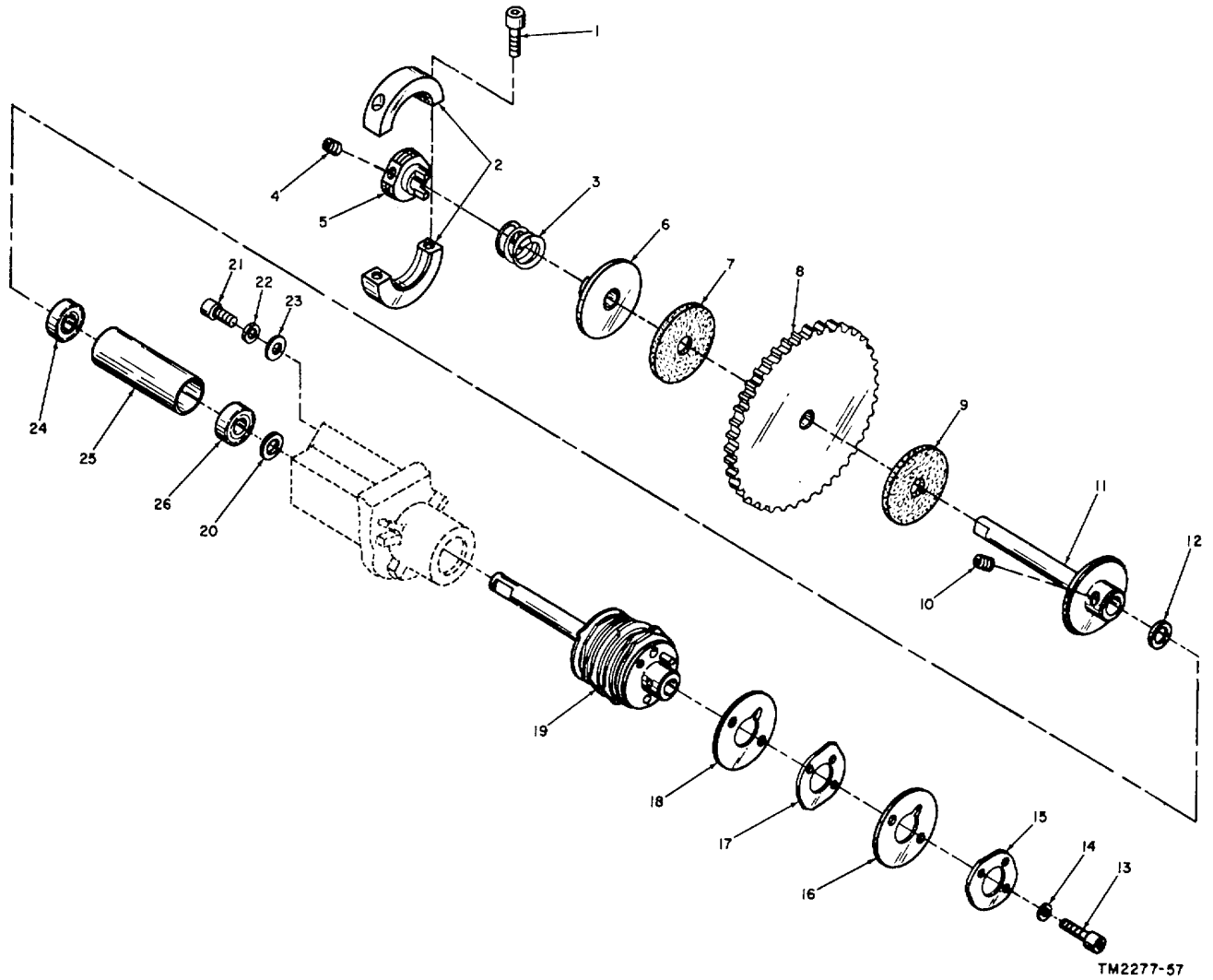


Figure 6. Distributor-transmitter camshaft.

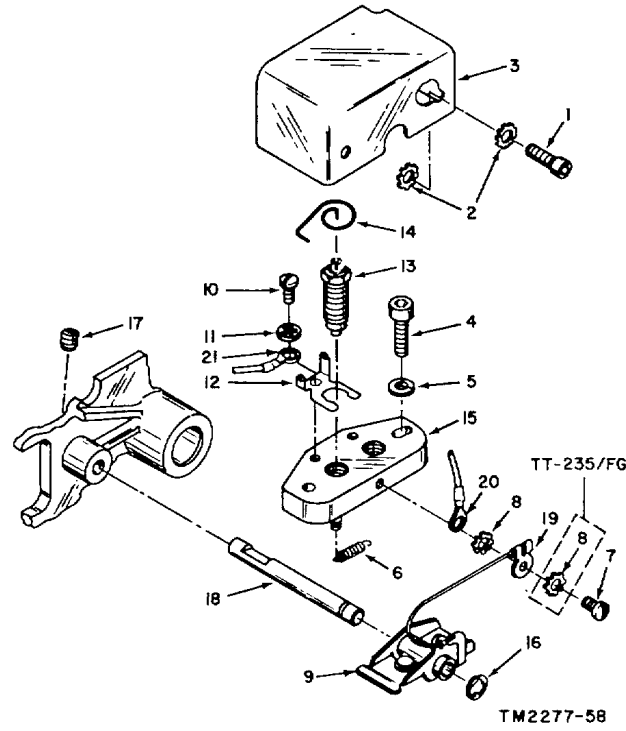


Figure 7. Transmitter contacts.

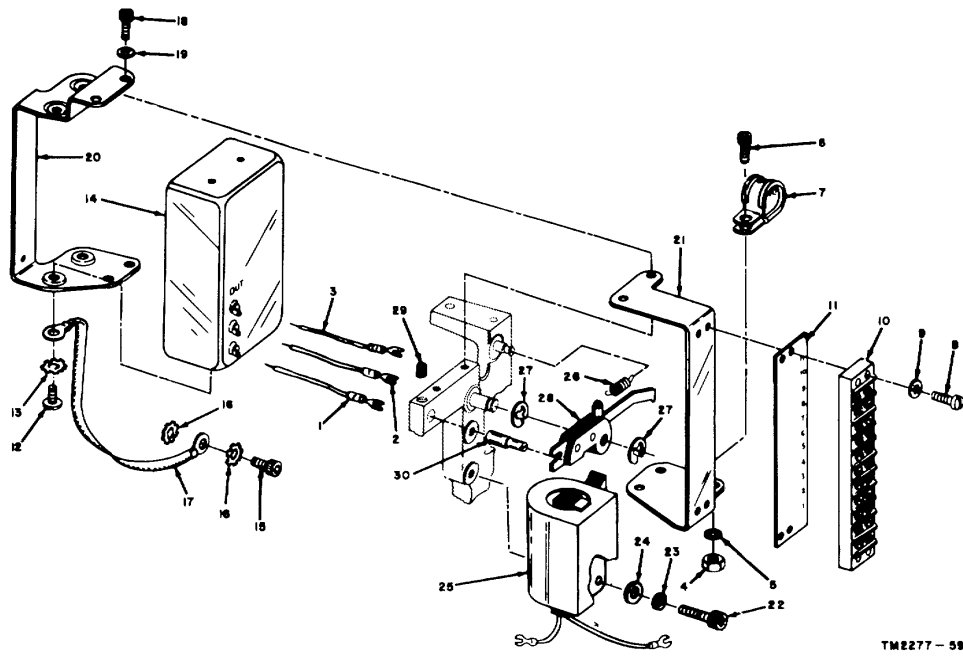
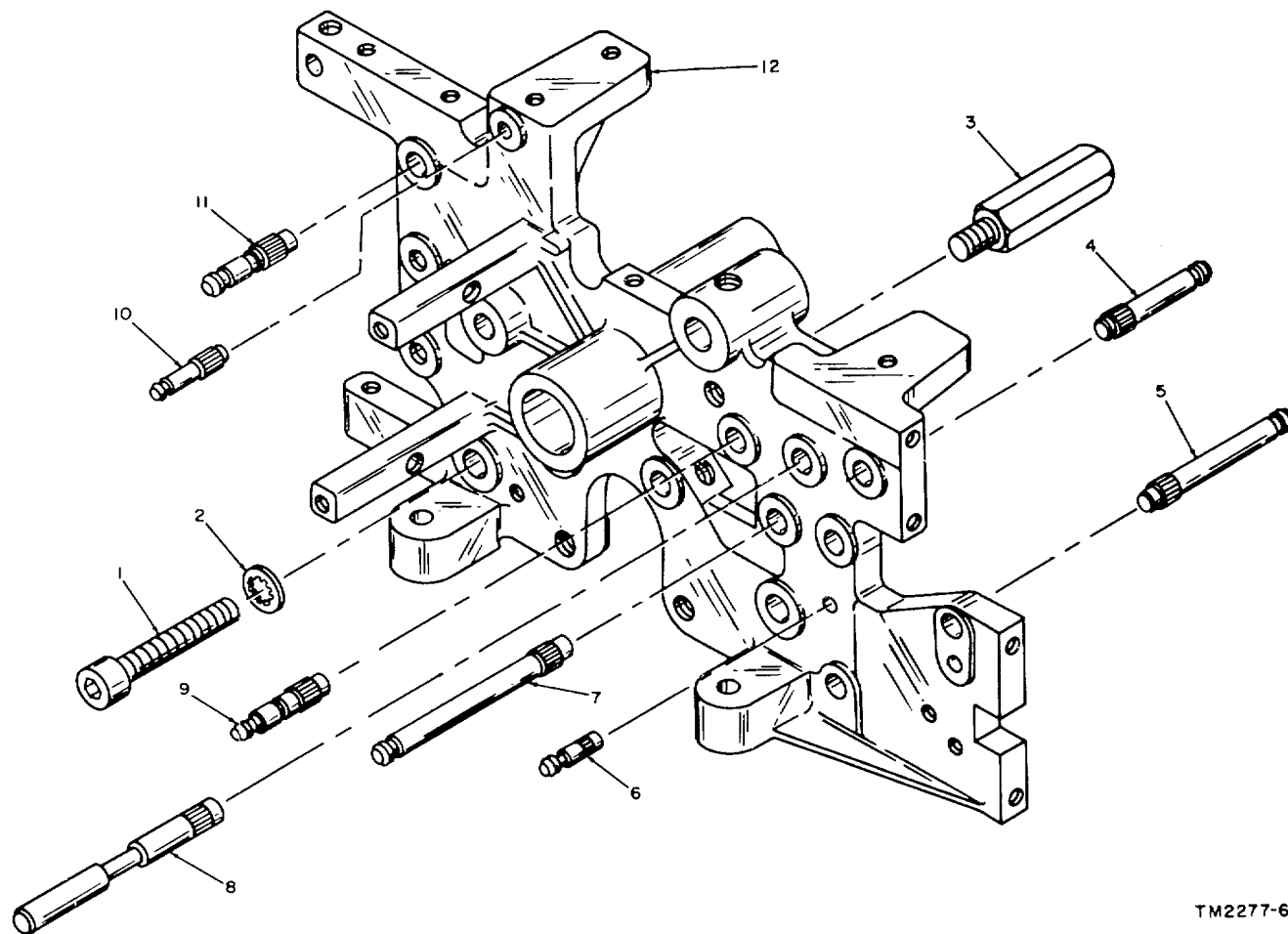


Figure 8. Magnet, filter, and terminal Board



TM2277-60

Figure 9. Tape transmitter frame.

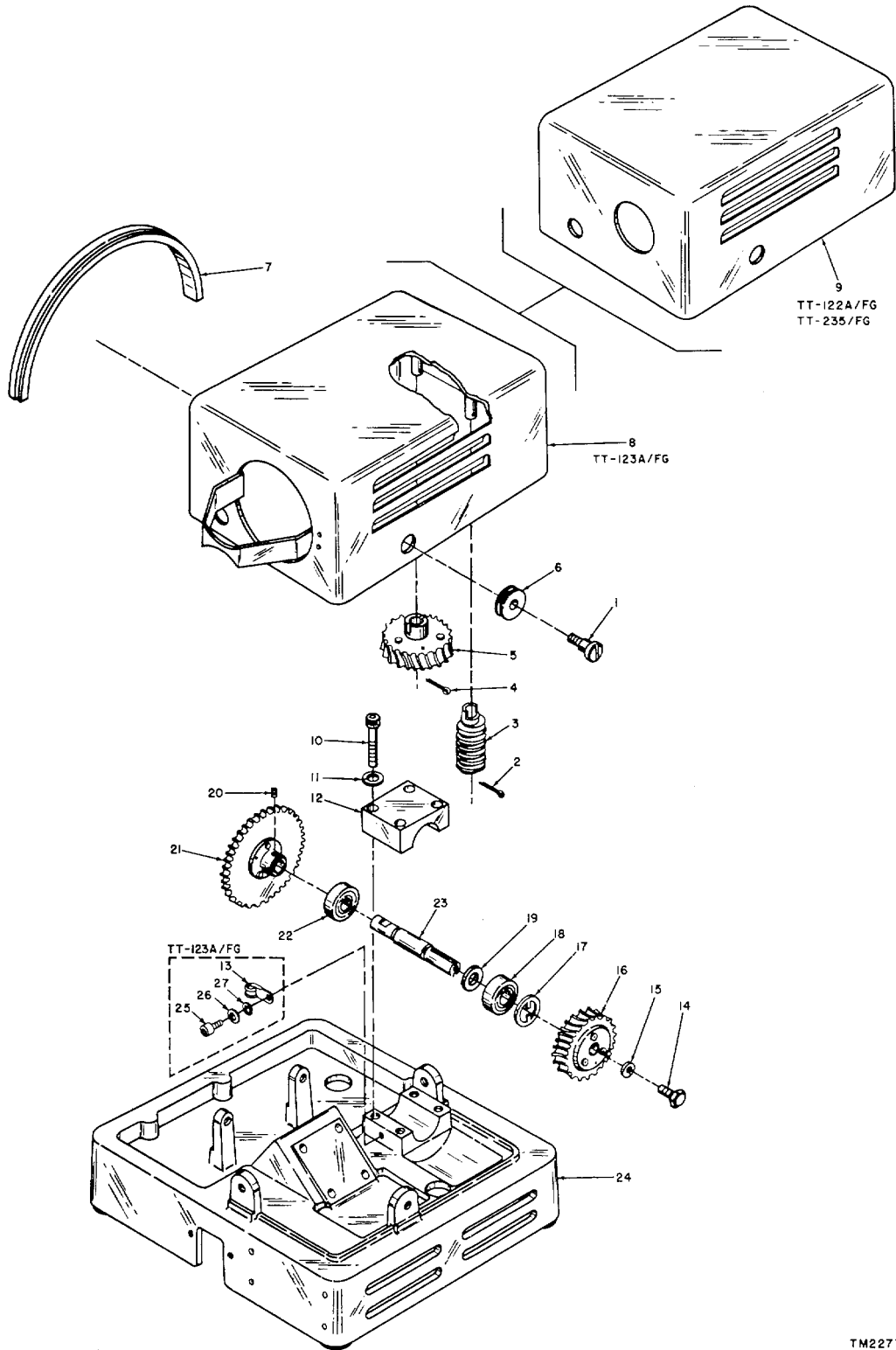


Figure 10. Motor dust cover, base frame, and power shaft.

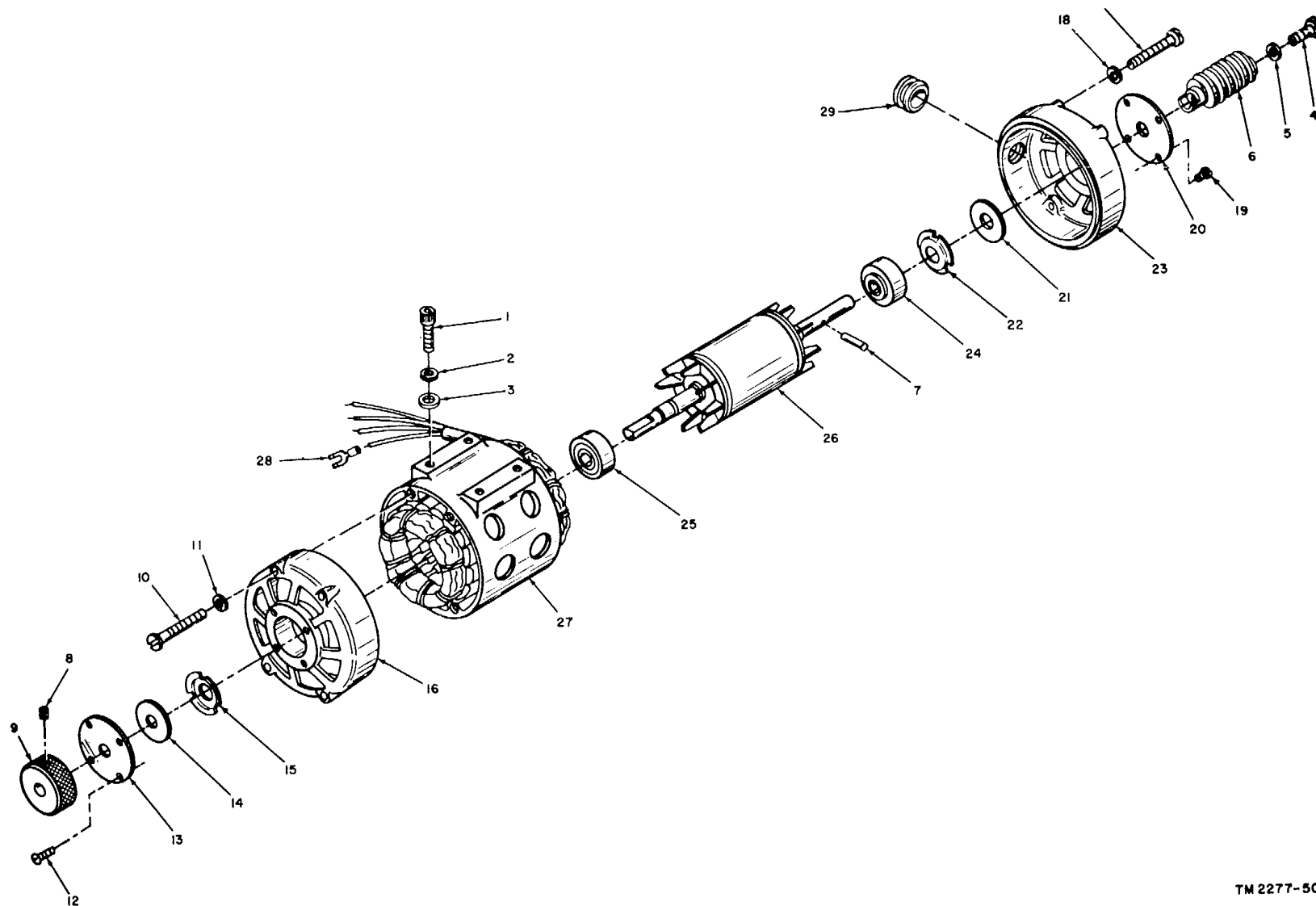


Figure 11. Synchronous motor.

Figure 12 Base electrical components.
(Located in back of manual)

7-9.5

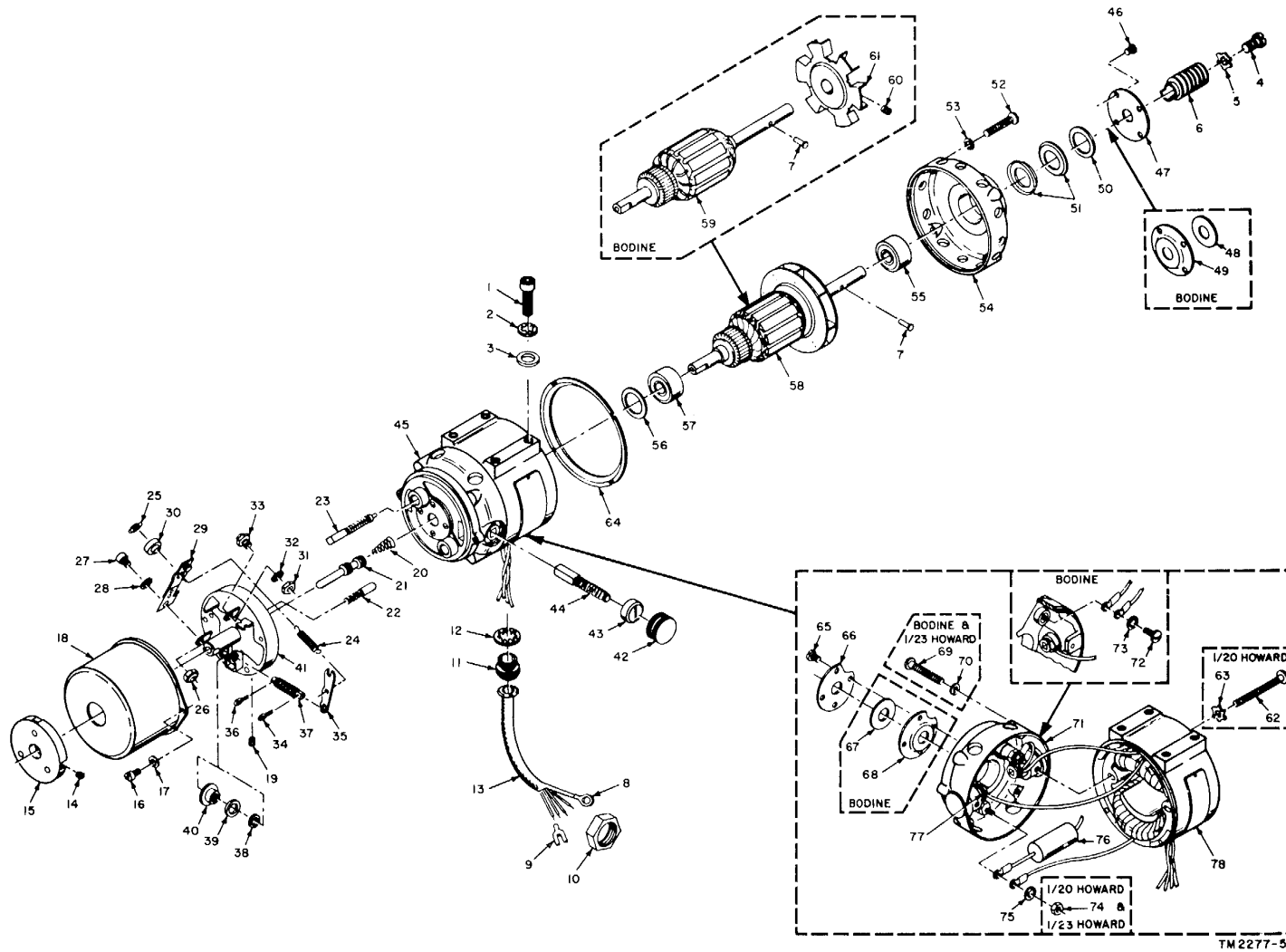


Figure 13. Series governed motor.

Figure 14 Base electrical components.
(Located in back of manual)

7-9.7

SECTION VIII. REPAIR PARTS FOR DIRECT SUPPORT, GENERAL SUPPORT, AND DEPOT MAINTENANCE (UNIQUE TO TT-702A/FG AND TT-703A/FG) -Continued

(1) SMR CODE	(2) FEDERAL STOCK NUMBER	(3) DESCRIPTION USABLE ON CODE REF. NUMBER & MFR. CODE	(4) U N I T O F M E A S U R E M E N T	(5) QTY INC IN UNIT	(6) 30-DAY DS MAINT			(7) 30-DAY GS MAINT			(8) 1-YR	(9) DEPOT	(10) ILLUS- TRATION	
					ALLOWANCE			ALLOWANCE			ALW	MAINT	(A)	(B)
					(A)	(B)	(C)	(A)	(B)	(C)	PER 100	ALW PER 100		
					1-20	21-50	51-100	1-20	21-50	51-100	CNTGY	EQUIP	NO.	NO.
P-F		MODIFICATION KIT MK-1765/FG (THIS ITEM IS NONEXPENDABLE) B001 CONNECTOR, RECEPTACLE, ELECTRICAL MS5302/17-13 (81349)	EA	1	*	*	*	*	*	*			15	1
P-F	5305-057-0523	B002 SCREW, MACHINE MS51958S-27 (96906)	EA	4	*	*	*	*	*	*	70	53	15	2
P-F	5310-929-6395	B003 WASHER, LOCK MS35338-136 (96906)	EA	6	*	*	*	*	*	*	25	10	15	3
P-F	5310-122-5998	B004 WASHER, FLAT MS15795-805 (96906)	EA	6	*	*	*	*	*	*	25	1	15	4
X2-F		B005 BRACKET, ELECTRICAL, CONNECTOR SMC785954 (80063)	EA	1									15	5
X2-F		B006 BRACKET, ELECTRICAL, CONNECTOR SMC785953 (81063)	EA	1									15	5
P-F	5815-239-4770	B007 CIRCUIT CARD ASSEMBLY TRANSMITTER SMC759840 (80063)	EA	1	*	*	*	*	*	*				7
P2-F		B008 POWER SUPPLY ASSEMBLY SMC785951 (80063)	EA	1	*	*	*	*	*	*	10	20		8
P-F	5815-239-4765	B009 TRANSMITTER CONTACT ASSEMBLY SMD759888 (80063)	EA	1	*	*	*	*	*	*	10	20	15	9
P-F		B010 SUPPRESSER NOISE SMD-759881 (80063)	EA	1	*	*	*	*	*	*	5		15	10
P-F	5305-054-6652	B011 SCREW, MACHINE MS51957-28 (96906)	EA	2	*	*	*	*	*	*	15	9	15	11
P-H	5905-405-8260	B012 RESISTOR, FIXED, COMPOSITION RCR42G471JS (81349)	EA	1				*	*	*	5		15	12
X2-F		B013 TERMINAL, LUG, SOLDER SMB785988 (80063)	EA	2										13
X2-F		B014 TERMINAL, LUG SMB7859887 (09922)	EA	6										14
X2-F	5930-813-0698	B015 TERMINAL, LUG MS25036-101 (96906)	EA	4										15
P-F	5325-174-5316	B016 GROMMET MS35489-2 (96906) CIRCUIT CARD ASSEMBLY TRANSMITTER	EA	1	*	*	*	*	*	*	5			16
P-D	5915-114-5407	B017 RESISTOR, FIXED, COMPOSITION RCR20G271JS (80349)	EA	2							10	6	16	1
P-D	5951-226-8584	B018 TRANSISTOR JAN2N222 (81349)	EA	1							20	10	16	2
P-D	5961-946-2023	B019 TRANSISTOR JAN2N2906A (81349)	EA	1							20	10	16	3
P-F	5910-008-0356	B020 CAPACITOR, FIXED, CERAMIC MS39014/2-0395 (81349)	EA	1	*	*	*	*	*	*	8	3	16	4
P-D		B021 RESISTOR, FIXED, COMPOSITION RCR20G470JM (81349)	EA	2							10	6	16	5
P-D	5961-068-0687	B022 SEMICONDUCTOR DEVICE, DIODE JAN1N3828A (81349)	EA	2							10	6	16	6
P-D		B023 RESISTOR, FIXED, COMPOSITION RCR20G123JM (349S)	EA	1							5	2	16	7
P-D		B024 CAPACITOR, FIXED, CERAMIC M39014/2-0396 (81349)	EA	2							16	6	16	8
P-D		B025 CONNECTOR, PLUG, ELECTRICAL MS5302/16-01 (81349)	EA	1							8	3	16	9
P-D	5905-104-8335	B026 RESISTOR, FIXED, COMPOSITION RCR20G124JS (81349)	EA	1							5	2	16	10
P-D	5961-938-11305	B027 SEMICONDUCTOR, DEVICE, DIODE JAN1N4148 (81349)	EA	1							14	8	16	11

AMSELMA Form
1 Sep 71 6048. (Replace AMSEL-ME 6048)

SECTION VIII. REPAIR PARTS FOR DIRECT SUPPORT, GENERAL SUPPORT, AND DEPOT MAINTENANCE (UNIQUE TO TT-702A/FG AND TT-703A/FG) -Continued

(1) SMR CODE	(2) FEDERAL STOCK NUMBER	(3) DESCRIPTION USABLE ON CODE REF. NUMBER & MFR. CODE	(4) U N I T O F M E A S	(5) QTY INC IN UNIT	(6) 30-DAY DS MAINT			(7) 30-DAY GS MAINT			(8) 1-YR	(9) DEPOT	(10) ILLUS- TRATION	
					ALLOWANCE			ALLOWANCE			ALW	MAINT	(A)	(B)
					(A)	(B)	(C)	(A)	(B)	(C)	PER	ALW	FIG	ITEM
					1-20	21-50	51-100	1-20	21-50	51-100	100	PER	NO.	NO.
P-D	5905-890-4236	B028 RESISTOR, FIXED, COMPOSITION RCR20G274JM (81349)	EA	2						10	6	16	12	
P-D		B029 INTEGRATED CIRCUIT OPERATIONAL SMC759843 (02735)	EA	1						10	5	16	13	
P-D	5905-100-4140	B030 RESISTOR, FIXED, COMPOSITION RCR2-G562JM (81349)	EA	1						5	2	16	14	
P-F		POWER SUPPLY ASSEMBLY TRANSFORMER POWER STEP DOWN SMD786100 (04799)												
P-F		B031	EA	1	*	*	*	*	*	30	15	17	2	
P-F	5305-054-5650	B032 CIRCUIT CARD ASSEMBLY, POWER SUPPLY SMC7885990 (80063)	EA	2	*	*	*	*	*	40	20	17	3	
P-F	5310-933-8118	B033 SCREW, MACHINE MS51957-16 (96906)	EA	2	*	*	*	*	*	25	10	17	4	
P-F	5310-595-6211	B034 WASHER, LOCK MS35338-135 (96906)	EA	2	*	*	*	*	*	25	10	17	5	
P-F	5961-849-4183	B035 WASHER, FLAT MS15795-803 (96906)	EA	2	*	*	*	*	*	25	10	17	5	
P-F		B036 SEMICONDUCTOR DEVICE, DIODE JAN1N2989B (81349)	EA	1	*	*	*	*	*	55	3	17	6	
X2-F		B037 BRACKET ASSEMBLY, POWER SUPPLY SMC785952 (80063)	EA	1								17	7	
X2-F	5305-054-6653	B038 SCREW, MACHINE MS51957-29 (96906)	EA	2								17	8	
P-F	5310-929-6395	B039 WASHER, LOCK SAME AS B003	EA	2						REF	REF	17	9	
P-F	5310-722-5998	B040 WASHER, FLAT	EA	2						REF	REF	17	10	
X2-F	53310-934-9761	B041 NUT, PLAIN, HEXAGON MS35649-264 (96906)	EA	2								17	11	
P-F		TRANSMITTER CONTACT ASSEMBLY B042 TERMINAL, RIGHT SMB759898-2 (80063)	EA	1	*	*	*	*	*	4	1	18	1	
P-F	5310-938-2013	B043 NUT, PLAIN, HEXAGON MS35649 (96906)	EA	2	*	*	*	*	*	10	5	18	2	
P-F	5310-928-2690	B044 WASHER, LOCK MS35338-134 (96906)	EA	2	*	*	*	*	*	40	20	18	3	
P-F	5310-595-6761	B045 WASHER, FLAT MS15795-802 (96906)	EA	2	*	*	*	*	*	40	20	18	4	
P-F		B046 TERMINAL, LEFT SMB759898-1 (80063)	EA	1	*	*	*	*	*	4	1	18	5	
P-F	5930-356-8010	B047 SWITCH CAPSULE FRY REED SMC759897 (95348)	EA	1	*	*	*	*	*	5	2	18	6	
P-F		B048 SPRING SMB759891 (80063)	EA	1	*	*	*	*	*	5	2	18	7	
P-F		B049 LIFTER PUSH ROD SMB759895 (80063)	EA	1	*	*	*	*	*	4	1	18	8	
P-F		B050 SCREW, MACHINE MS51957-6 (96906)	EA	2	*	*	*	*	*	40	20	18	9	
P-F	5365-084-4355	B051 RING, RETAINING MS3215-4018 (96906)	EA	1	*	*	*	*	*	10	4	18	10	
P-F		B052 SPRING SMB759900 (80063)	EA	1	*	*	*	*	*	5	2	18	11	
P-F		B053 YOKE, PUSHROD SMC759896 (80063)	EA	1	*	*	*	*	*	4	1	18	12	

AMSELMA Form
1 Sep 71 6048 (Replaces AMSEL-ME 6048)

**SECTION VIII. REPAIR PARTS FOR DIRECT SUPPORT, GENERAL SUPPORT, AND DEPOT MAINTENANCE
(UNIQUE TO TT-702A/FG AND TT-703A/FG) -Continued**

(1) SMR CODE	(2) FEDERAL STOCK NUMBER	(3) DESCRIPTION REF. NUMBER & MFR. CODE	(4) U N I T O F M E A S U R E	(5) QTY INC IN UNIT	(6) 30-DAY DS MAINT			(7) 30-DAY GS MAINT			(8) 1-YR	(9) DEPOT	(10) ILLUS- TRATION	
					ALLOWANCE			ALLOWANCE			ALW PER 100	MAINT ALW PER 100	(A)	(B)
					(A)	(B)	(C)	(A)	(B)	(C)	EQUIP	EQUIP	FIG NO.	ITEM NO.
P-F	5315-844-392	054 IN SPRING MS16562-6 (96906)	EA	1	*	*	*	*	*	*	40	20	18	13
P-F	5315-844-3939	B055 PIN SPRING MS16562-2 (96906)	EA	1	*	*	*	*	*	*	40	20	18	14
P-F		B056 FIELD INTERRUPTER ASSEMBLY SMC759892 (80063)	EA	1	*	*	*	*	*	*	4	1	18	15

AMSEL MA
1 Sep 71 6048

(Replaces AMSEL-ME 6048)

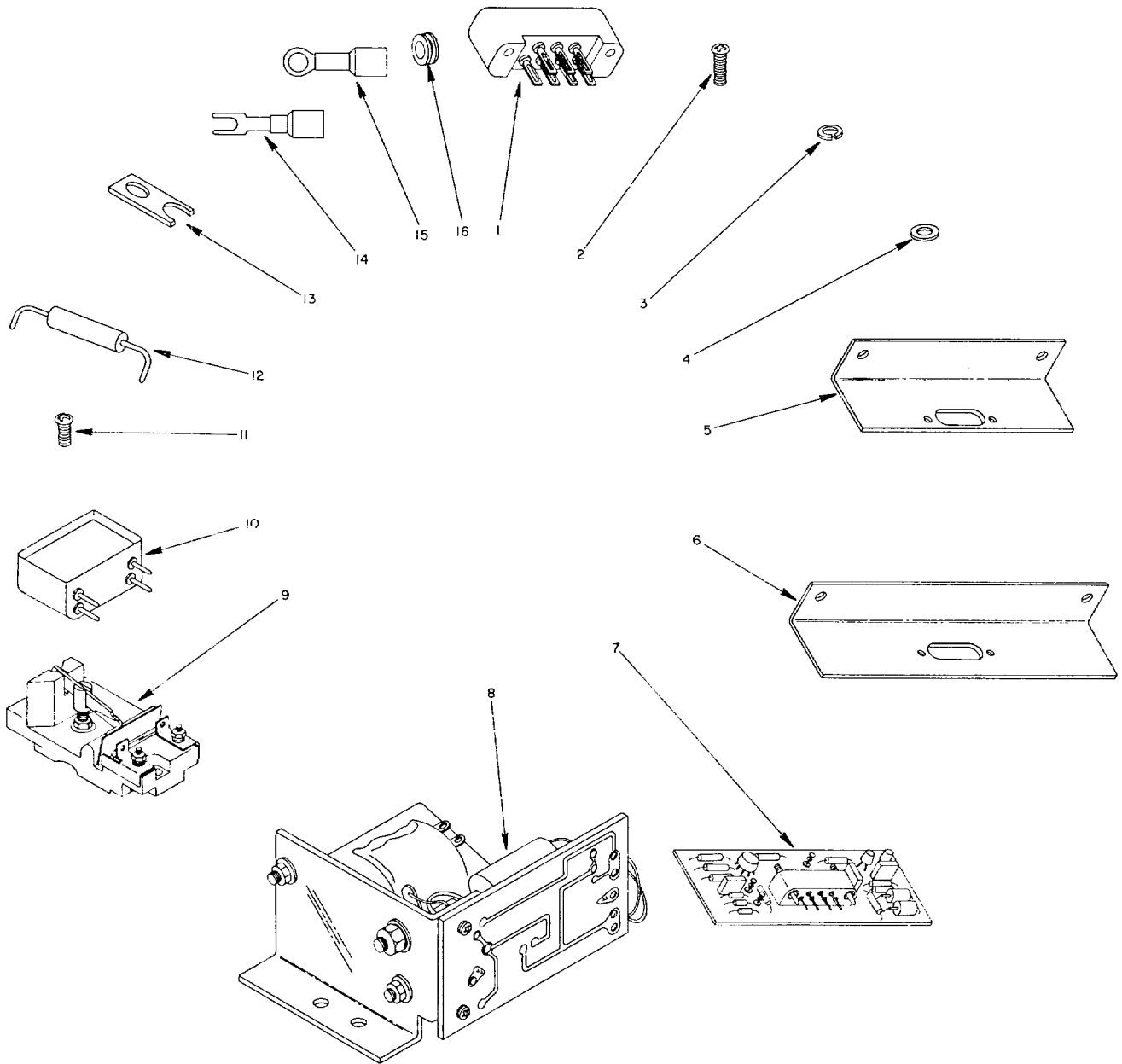


Figure 15. Parts unique to TT-702A/FG and TT-703A/FG.

Change 1 8-4

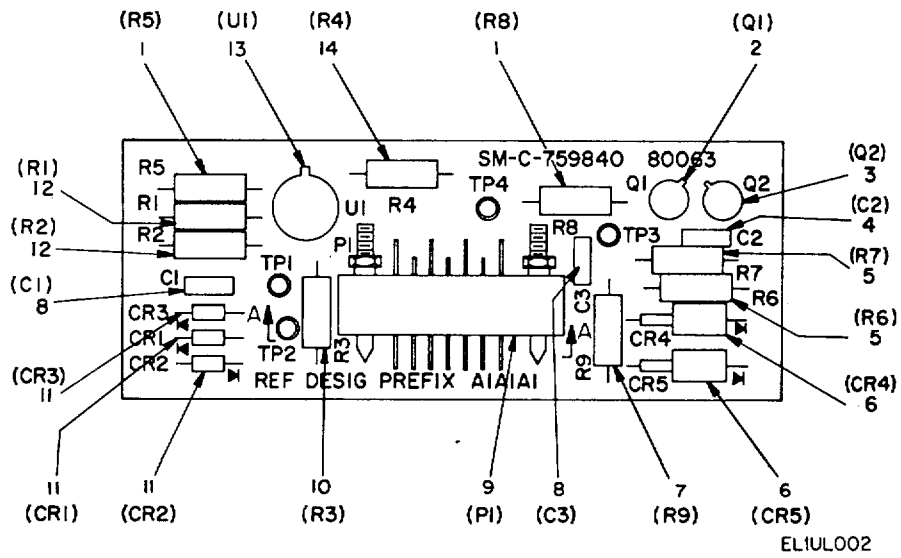


Figure 16. Circuit cord assembly, transmitter.

Change 1 8-5

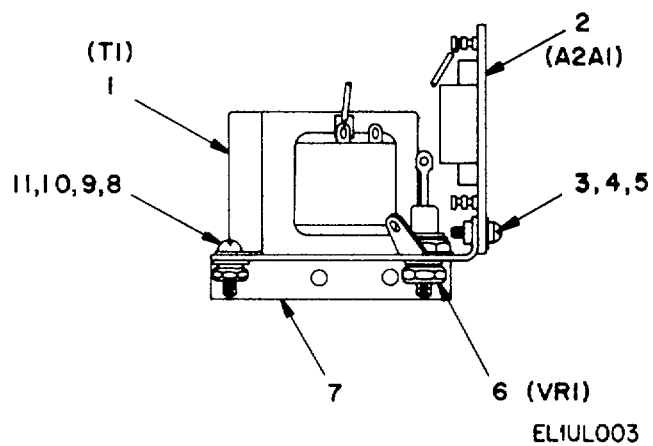


Figure 17. Power supply assembly.

Change 1 8-6

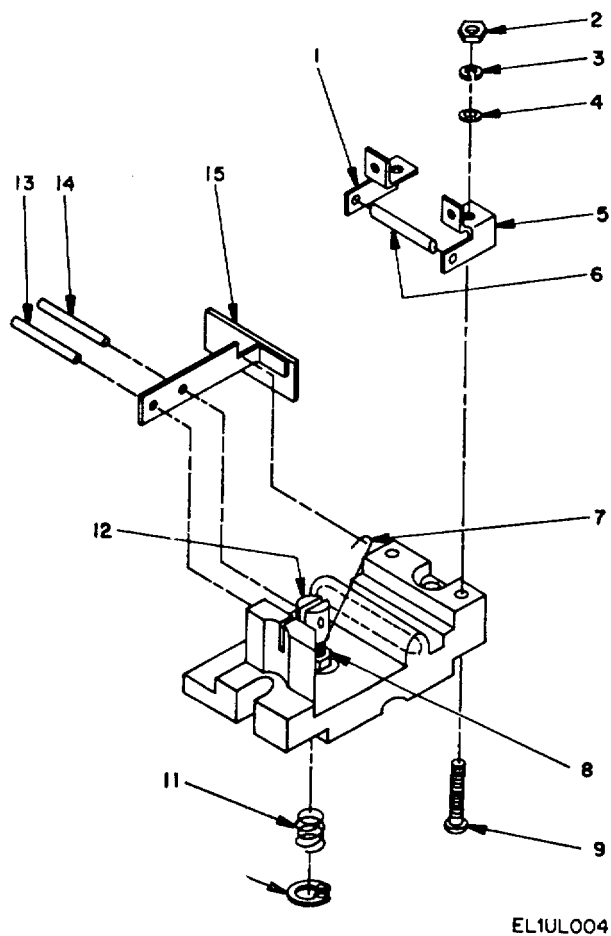


Figure 18. Transmitter contact assembly.

Change 1 8-7/(8-8 blank)

SECTION X. INDEX-FEDERAL STOCK NUMBER AND REFERENCE NUMBER CROSS REFERENCE TO FIGURE AND ITEM NUMBER OR REFERENCE DESIGNATION (UNIQUE TO TT-702A/FG AND TT-703A/FG)

<u>STOCK NUMBER</u>	<u>FIG.</u>	<u>ITEM</u>	<u>STOCK NUMBER</u>	<u>FIG.</u>	<u>ITEM</u>
5305-054-5650	17	3			
5305-054-6652	15	11			
5305-054-6653	17	8			
5305-057-0523	15	2			
5310-722-5998	15	4			
5310-595-6211	17	5			
5310-595-6761	18	4			
5310-722-5998	17	10			
5310-928-2690	18	3			
5310-929-6395	15	3			
5310-929-6395	17	9			
5310-933-8118	17	4			
5310-934-9671	17	11			
5310-938-2013	18	2			
5315-844-3939	18	14			
5315-844-3942	18	13			
5325-174-5315	15	16			
5365-084-4355	18	10			
5815-239-4765	15	9			
5815-239-4770	15	7			
5905-100-4140	16	14			
5905-114-5407	16	1			
5905-104-8335	16	10			
5905-405-8260	15	12			
5905-890-4236	16	12			
5910-008-0365	16	4			
5930-356-8010	18	6			
5930-813-0698	15	15			
5961-068-0687	16	6			
5961-226-8584	16	2			
5961-849-4183	17	6			
5961-938-1135	16	11			
5961-946-2023	16	3			

Change 1 8-9

SECTION X. INDEX-FEDERAL STOCK NUMBER AND REFERENCE NUMBER CROSS REFERENCE TO FIGURE AND ITEM NUMBER OR REFERENCE DESIGNATION (UNIQUE TO TT-702A/FG AND TT-703A/FG)

<u>Part</u> <u>Number</u>	<u>FSCM</u>	<u>Fig.</u> <u>No.</u>	<u>Item.</u> <u>No.</u>	<u>Part</u> <u>Number</u>	<u>FSCM</u>	<u>Fig.</u> <u>No.</u>	<u>Item</u> <u>No.</u>
JAN1N2989B	81349	17	6				
JAN1N3828A	81349	16	6				
JAN1N4148	81349	16	11				
JAN2N2222	81349	16	2				
JAN2N2906A	81349	16	3				
MS15795-802	96906	18	4				
MS15795-803	96906	17	5				
MS15795-805	96906	15	4				
MS15795-805	96906	17	10				
MS16562-2	96906	18	14				
MS16562-6	96906	18	13				
MS25036-101	96906	15	15				
MS3215-4018	96906	18	10				
MS35338-134	96906	18	3				
MS35338-135	96906	17	4				
MS35338-136	96906	15	3				
MS35338-136	96906	17	9				
MS35489-2	96906	15	16				
MS35649-224	96906	18	2				
MS35649-264	96906	17	11				
MS39014/2-0395	81349	16	4				
M39014/2-0396	81349	16	8				
MS51957-16	96906	17	3				
MS51957-28	96906	15	11				
MS51957-29	96906	17	8				
MS51957-6	96906	18	9				
MS51958-27	96906	15	2				
MS5302/16-01	81349	16	9				
MS5302/17-13	81349	15	1				
RCR20G123JM	81349	16	7				
RCR20G124JS	81349	16	10				
RCR20G271JS	81349	16	1				
RCR20G274JM	81349	16	12				
RCR20G470JM	81349	16	5				
RCR42G471JS	81349	15	12				
RCR20G562JM	81349	16	14				
SMB759891	80063	18	7				
SMB759895	96906	18	8				
SMB759898-1	80063	18	5				
SMB759898-2	80063	18	1				
SMB759900	80063	18	11				
SMB785987	09922	15	14				
SMB785988	80063	15	13				
SMC759840	80063	15	7				
SMC759843	02735	16	13				
SMC759892	80063	18	15				
SMC759896	80063	18	12				
SMC759897	95348	18	6				
SMC785951	80063	15	8				
SMC785952	80063	17	7				
SMC785953	80063	15	6				
SMC785954	80063	15	5				
SMC785990	80063	17	2				
SMD759881	80063	15	10				
SMD759888	80063	15	9				
SMD786100	04799	17	1				

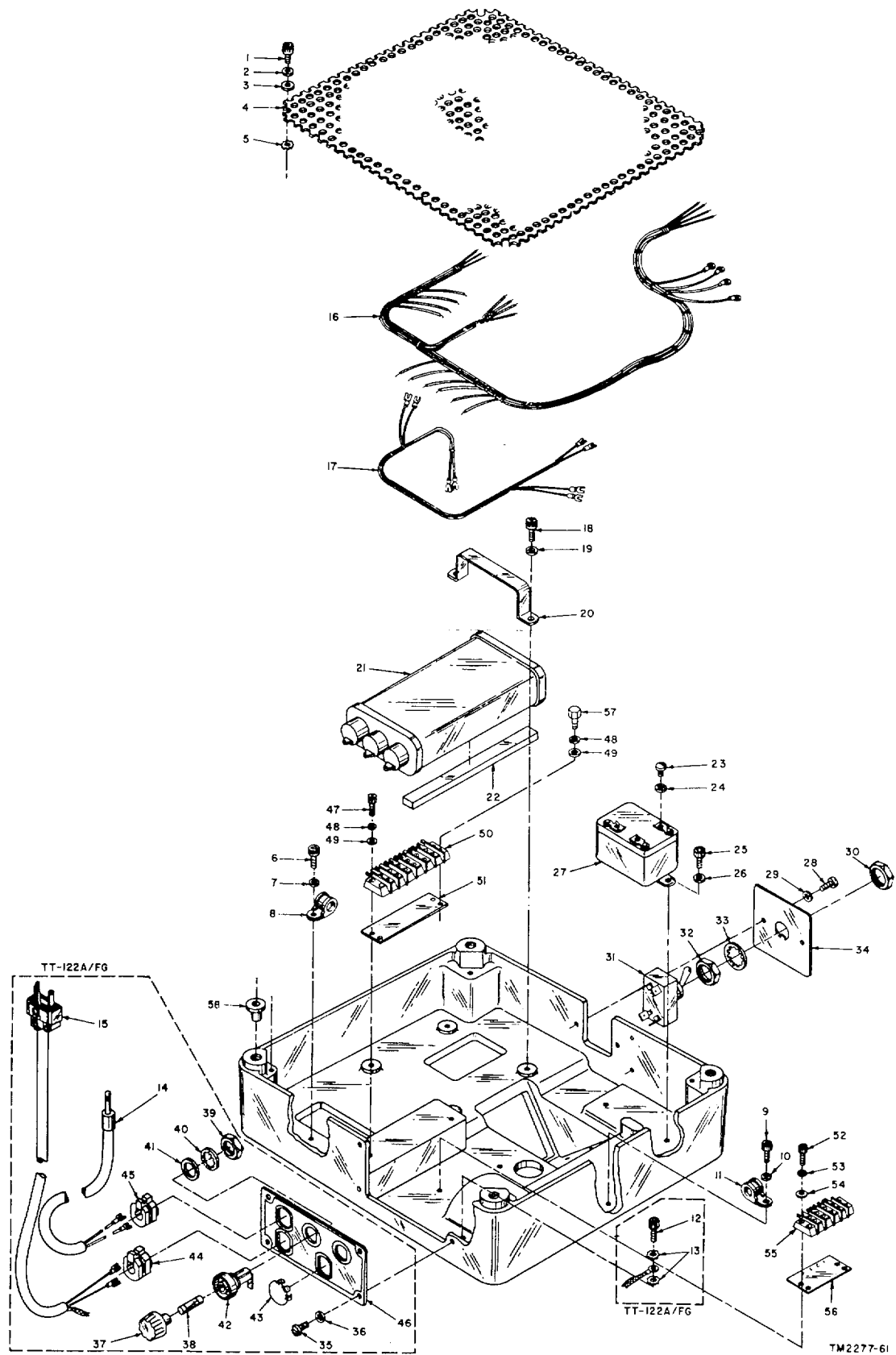


Figure 12. Base electrical components.

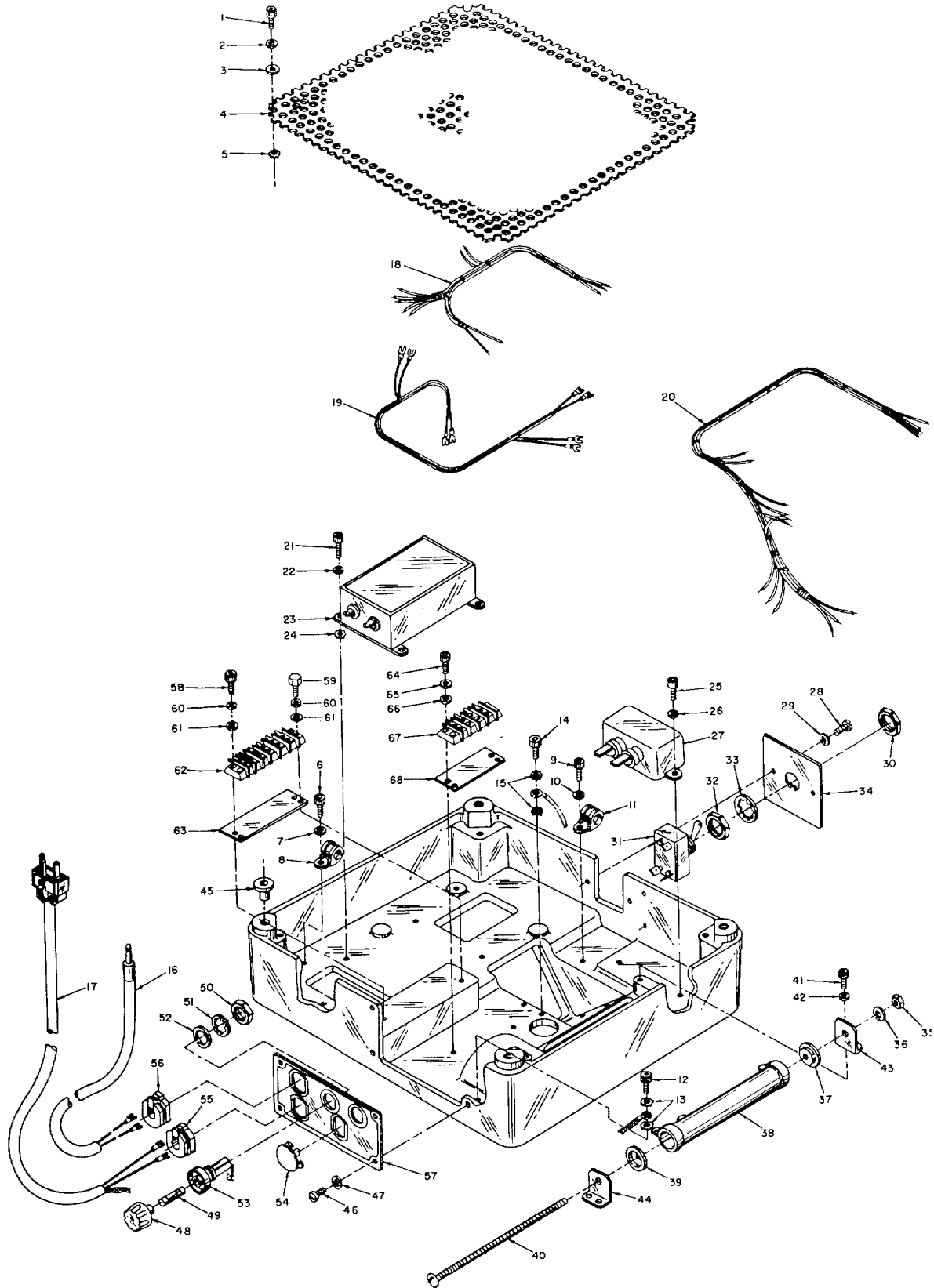


Figure 14. Base electrical components

By Order of the Secretary of the Army:

CREIGHTON W. ABRAMS,
General, United States Army,
Chief of Staff.

Official:

VERNE L. BOWERS
Major General, United State Army,
The Adjutant General.

Distribution:

Active Army:

USASA (2)	USAINTS(3)
CNGB(1)	WRAMC(1)
ACSC-E(2)	USACDCEC (10)
Dir of Trans (1)	ATS (1)
COE (1)	Instl (2) except
TSG (1)	Fort Gordon (10)
USAARENBD (1)	For Huachuca(10)
USAMB (10)	Fort Carson (5)
AMC (1)	Ft Richardson (ECOM Ofc) (2)
TRADOC (2)	Army Dep (2) except
ARADCOM (2)	LBAD (14)
ARADCOM Rgn (2)	SAAD (30)
OS Maj Comd (4)	TOAD (14)
LOGCOMDS (3)	ATAD (10)
MICOM (2)	USA Dep (2)
TECOM (2)	Sig Sec USA Sep (2)
USASA-PAC (2)	Sig Dep (2)
USACC-EUR (10)	Sig FLDMS (1)
USACC-PAC (2)	USAERDAA (1)
USACC (4)	USAERDAW (1)
MDW (1)	MAAG (1)
Armies (2)	USARMIS (1)
Corps (2)	Units org under fol TOE:
HISA (ECOM) (18)	(1 copy each)
Svc College (1)	11-97
USASCS (20)	11-98
USASESS (40)	11-117
USAADS (2)	11-302
USAFAS (2)	11-500 (AA-AC)
USAARMS (2)	29-134
USAIS (2)	29-136
USAES (2)	WSMR (1)

NG: None

USAR: None

For explanation of abbreviations used, see AR 310-50.

RECOMMENDED CHANGES TO EQUIPMENT TECHNICAL PUBLICATIONS



THEN... JOT DOWN THE DOPE ABOUT IT ON THIS FORM, CAREFULLY TEAR IT OUT, FOLD IT AND DROP IT IN THE MAIL!

SOMETHING WRONG WITH THIS PUBLICATION?

FROM: (PRINT YOUR UNIT'S COMPLETE ADDRESS)

DATE SENT

PUBLICATION NUMBER

PUBLICATION DATE

PUBLICATION TITLE

BE EXACT... PIN-POINT WHERE IT IS

PAGE NO.

PARA-GRAPH

FIGURE NO.

TABLE NO.

IN THIS SPACE TELL WHAT IS WRONG AND WHAT SHOULD BE DONE ABOUT IT:

TEAR ALONG PERFORATED LINE

PRINTED NAME, GRADE OR TITLE, AND TELEPHONE NUMBER

SIGN HERE:

DA FORM 2028-2
1 JUL 79

PREVIOUS EDITIONS ARE OBSOLETE.

P.S.—IF YOUR OUTFIT WANTS TO KNOW ABOUT YOUR RECOMMENDATION MAKE A CARBON COPY OF THIS AND GIVE IT TO YOUR HEADQUARTERS.

PIN NUMBER 018323